

File No:	6090.100
Date:	December 5, 2011
Supersedes:	6090.100
Date:	August 1, 2000

# **ARMSTRONG**

# **IMPELLER IDENTIFICATION**

## **IMPELLER IDENTIFICATION**

FOR LEGACY STYLE TANGENTIAL END SUCTION AND VERTICAL IN-LINE  
PUMP SIZES "D", "E", "F", "FN", "G" AND "GN"

**LEGACY DESIGN**

# ARMSTRONG

## LEGACY STYLE TANGENTIAL PUMPS CATALOG DESIGNATIONS

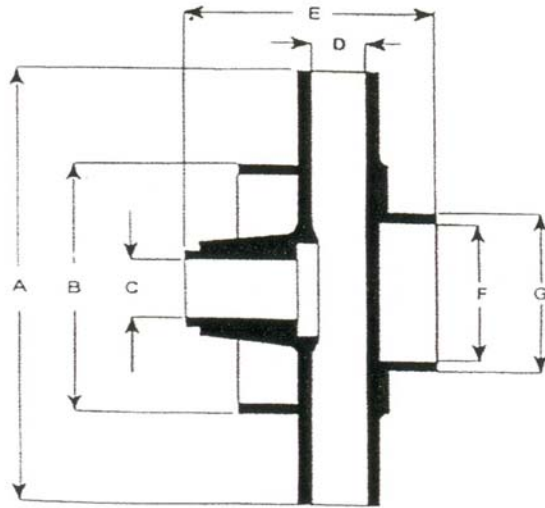
### ARMSTRONG TO B&G CROSS REFERENCE

"JUNIOR " BEARING FRAME ASSEMBLY								
CUSTOM SIZES								
B&G	1524	3/4 AAB			1 AAB	1 1/4 AAB		1 1/2AAB
ARMSTRONG	4000	3/4 B			1B	1 1/4B		1 1/2B
STOCK SIZES								
CUSTOM SIZES		3/4 AAB			1 AAB	1 1/4 AAB		1 1/2AAB
FORMERLY	JR. UNIVERSAL	JU-10	JU-12	-	JU-14	JU-16	JU-18	JU-20
NEW DESIG.	4000	B-80	B-82	-	B-84	B-86	B-88	B-90

"SMALL" AND "MEDIUM" BEARING FRAME PUMPS																			
CUSTOM SIZES																			
B&G	1510	1 1/4AB	1 1/2AB	2AB	2 1/2A	3A	4AB	1 1/4BB	1 1/2BB	2BB	2 1/2B	3BB	4BB	5BB	6BB	2G	3G	4G	6G
ARMSTRONG	4030	1 1/4D	1 1/2D	2D	2 1/2D	3D	4D	1 1/4E	1 1/2E	2E	2 1/2E	3E	4E	5E	6E	2C	3C	4C	6C
B&G	UNIVERSAL	U1 1/4A	U 1/2A	U2A	U2 1/2A	U3A	U4A	U1 1/4B	U1 1/2B	U2B	U2 1/2B	U3B	U4B	U5B					
ARMSTRONG	4020	1 1/4D	1 1/2D	2D	2 1/2D	3D	4D	1 1/4E	1 1/2E	2E	2 1/2E	3E	4E	5E					
STOCK SIZES ( See 4020 Parts List Item 102 Impeller (Stock Sizes) For Impeller Diameters )																			
CUSTOM SIZES		1 1/4D	1 1/2D	2D	2 1/2D	3D	4D	1 1/4E	1 1/2E	2E	2 1/2E	3E	4E	5E					
B&G	UNIVERSAL	-	-	-	U1			-	-	-	U5	-		U8					
		-	-	-	U2	U4	U6	-	-	-	U7	-	U11	U10					
		-	-	-	U3			-	-	-	U9	-		U12					
ARMSTRONG	4020	-	-	-	D141			-	-	-	E145	-		E148					
		-	-	-	D142	D144	D146	-	-	-	E147	-	E151	E150					
		-	-	-	D143			-	-	-	E149	-		E152					

# COMMERCIAL AND INDUSTRIAL PUMP IMPELLER IDENTIFICATION

FOR LEGACY STYLE PUMP SIZES "D", "E", "F", "FN", "G", "GN"



C	F	G	B	D	E	A			
BORE	EYE	EYE	BAL. RING	BLADE	LENGTH	MAX.	NO.	IMPELLER PART	*PUMP
	I.D.	O.D.	O.D.	WIDTH		DIA.	BLADES	NUMBER	SIZE
7/8"	1.5	2.011	4.087	7/16	3.22	7"	6	411852-011 & 041	1 1/4D
7/8"	2	2.46	4.087	5/8	3	7"	5	406642-011 & 041	2 1/2D
7/8"	2	2.522	6.965	17/32	3	9.5"	6	407922-011 & 041	1 1/4, 1 1/2E
7/8"	2	2.522	4.087	17/32	3	7"	6	411860-011 & 041	1 1/2, 2D
7/8"	2.5	3.065	6.965	23/32	3.28	9.5"	5	411881-011 & 041	2, 2 1/2E
7/8"	3	3.695	6.965	3/4	3.72	9.5"	5	419465-011 & 041	3E
7/8"	3.875	4.365	4.087	1	3.565	7"	6	411868-011 & 041	3D
7/8"	3.125	3.695	4.087	1	3.625	7"	5	425529-011 & 041	**3D VERTICAL
7/8"	3.5	4.155	6.965	1 3/8	3.938	9.5"	5	411940-011 & 041	4E
7/8"	3.125	3.695	4.087	1 1/2	4.125	7"	5	411874-011 & 041	4D
7/8"	4.5	5.155	6.965	1 1/2	4.345	9.5"	5	425540-011 & 041	**4E VERTICAL
7/8"	4.5	5.155	6.965	2 1/4	5.125	9.5"	5	411941-011 & 041	5E

NOTES: \* FOR B&G EQUIVALENT SEE CATALOG DESIGNATIONS PAGE 1

\*\* NO B&G EQUIVALENT

# COMMERCIAL AND INDUSTRIAL PUMP IMPELLER IDENTIFICATION

FOR LEGACY STYLE PUMP SIZES "D", "E", "F", "FN", "G", "GN"

<b>C</b>	<b>F</b>	<b>G</b>	<b>B</b>	<b>D</b>	<b>E</b>	<b>A</b>			
BORE	EYE I.D.	EYE O.D.	BAL. RING O.D.	BLADE WIDTH	LENGTH	MAX. DIA.	NO. BLADES	IMPELLER PART NUMBER	PUMP** SIZE
1 1/4"	2.875	3.5	6.965	3/8	4.125	12.50"	5	419543-011 & 041	2G
1 1/4"	1.5	2.011	4.087	7/16	3.625	7.5"	6	425409-011 & 041	**1 1/4D VERTICAL
1 1/4"	2.75	3.5	6.965	1/2	4.128	12.5"	5	419008-011 & 041	3G
1 1/4"	2	2.522	4.087	17/32	3.75	7.5"	6	419229-011 & 041	1 1/2, 2D
1 1/4"	2	2.522	6.96	17/32	3.75	9.5"	6	419238-011 & 041	1 1/4, 1 1/2E
1 1/4"	2	2.46	4.087	5/8	3.97	7"	5	419232-011 & 041	2 1/2D
1 1/4"	2.5	3.065	6.965	23/32	4.03	9.5"	5	419239-011 & 041	2E
1 1/4"	3	3.695	6.965	3/4	4.475	9.5"	5	419241-011 & 041	3E
1 1/4"	3.75	4.365	4.087	1	4.087	7"	6	419234-011 & 041	3D
1 1/4"	3.125	3.695	4.087	1	4.375	7"	5	425530-011 & 041	**3D VERTICAL
1 1/4"	3.5	4.155	6.965	1 3/8	4.688	9.5"	5	419243-011 & 041	4E
1 1/4"	3.125	3.695	4.087	1 1/2	4.875	7"	5	419236-011 & 041	4D
1 1/4"	7	7.755	6.965	1 1/2	4.938	12.5"	6	419541-011 & 041	8G
1 1/4"	4.5	5.155	6.965	1 1/2	5.095	9.5"	5	425539-011 & 041	**4E VERTICAL
1 1/4"	3.28	4	6.965	1 3/4	4.375	12.5"	5	419009-011 & 041	4G
1 1/4"	4.5	5.155	6.965	2 1/4	5.875	9.5"	5	419245-011 & 041	5E
1 1/4"	5.5	5.915	6.965	2 5/8	6.28	9.5"	5	419247-011 & 041	6E
1 1/4"	5.5625	6.747	6.963	-	4.125	13"	5	425774-011 & 041	**4GN VERTICAL
1 1/4"	6.5	6.747	6.963	1 3/8	4.22	13"	7	425714-011 & 041	**6F VERTICAL
1 1/4"	6.5	6.747	6.963	15/16	4.22	13"	7	425715-011 & 041	**6FN VERTICAL
1 1/4"	7	7.843	8.963	1 9/32	4.777	13"	7	425716-011 & 041	**6G VERTICAL
1 1/4"	7	7.843	8.963	7/8	4.777	13"	7	425717-011 & 041	**6GN VERTICAL

**NOTES: \* FOR B&G EQUIVALENT SEE CATALOG DESIGNATIONS PAGE 1**

**\*\* NO B&G EQUIVALENT**

# COMMERCIAL AND INDUSTRIAL PUMP IMPELLER IDENTIFICATION

FOR LEGACY STYLE PUMP SIZES "D", "E", "F", "FN", "G", "GN"

<b>C</b>	<b>F</b>	<b>G</b>	<b>B</b>	<b>D</b>	<b>E</b>	<b>A</b>			
BORE	EYE I.D.	EYE O.D.	BAL. RING O.D.	BLADE WIDTH	LENGTH	MAX. DIA.	NO. BLADES	IMPELLER PART NUMBER	PUMP** SIZE
1 1/4"	7	7.843	6.963	1 3/4	4.845	11	7	425723-011 & 041	**8F VERTICAL
1 1/4"	7	7.843	6.963	1	4.845	11	7	425725-011 & 041	**8FN VERTICAL
1 1/4"	7.75	8.128	8.963	1 25/32	5.405	13"	7	425718-011 & 041	**8G VERTICAL
1 1/4"	7.75	8.128	8.963	1 9/32	5.405	13"	7	425719-011 & 041	**8GN VERTICAL
1 5/8"	6.5	6.747	6.963	1 3/8	4.22	13"	7	425731-011 & 041	**6F VERTICAL
1 5/8"	6.5	6.747	6.963	15/16	4.22	13"	7	425732-011 & 041	**6FN VERTICAL
1 5/8"	7	7.843	8.963	1 9/32	4.777	13"	7	425733-011 & 041	**6G VERTICAL
1 5/8"	7	7.843	8.963	7/8	4.777	13"	7	425734-011 & 041	**6GN VERTICAL
1 5/8"	7	7.843	6.963	1 3/4	4.845	11	7	425724-011 & 041	**8F VERTICAL
1 5/8"	7	7.843	6.963	1	4.845	11	7	425726-011 & 041	**8FN VERTICAL
1 5/8"	7.75	8.128	8.963	1 25/32	5.405	13"	7	425735-011 & 041	**8G VERTICAL
1 5/8"	7.75	8.128	8.963	1 9/32	5.405	13"	7	425734-011 & 041	**8GN VERTICAL
2 1/8"	9	9.968	9.968	3 1/2	7.5	11 5/8"	7	425727-011 & 041	**10 F VERTICAL
2 1/8"	8.25	8.963	8.963	2 1/2	7.5	11 5/8"	7	425728-011 & 041	**10FN VERTICAL

**NOTES: \* FOR B&G EQUIVALENT SEE CATALOG DESIGNATIONS PAGE 1**

**\*\* NO B&G EQUIVALENT**