

**DESIGN
ENVELOPE[®]**

Fire Pump Unit[™]

Self Regulating Variable Speed
Fire Pump Technology

43PF Design Envelope and
Conventional Pump Parts and Kits

CATALOG

FILE NO: F100.250
DATE: JANUARY 2024

SUPERSEDES: F100.250
DATE: AUGUST 2021

—

—

—

—

CONTENTS

INTRODUCTION	4
43PF FIXED SPEED PARTS LIST	5
DE 43PF SRVSFPU- PARTS LIST	6
FLUSH LINE KIT	7
CASING GASKET KIT	7
COUPLING KIT	8
PACKING RING KIT	9
SHROUD PARTS	10
DEFC PARTS KIT WITHOUT BEZEL	11
DEFC PARTS KIT BEZEL	11

INTRODUCTION

Armstrong was founded on the core values of Community, Service, Learning and Innovation. Reflecting our commitment to service, Armstrong now provides 360 Service and Support. Working collaboratively with the 'partner' companies in our network, we're ready to provide the service and support that customers need in relation to building performance.

A key part of serving our customers is providing Genuine Armstrong Replacement Parts to support installations of our products. But the value we provide goes beyond the quality of the replacement part.

With the availability of parts in packaged kits, you'll never have to leave a repair incomplete just because you didn't have all the pieces required for the job. And you won't have to pay a premium for rush delivery of additional parts.

Your customers will be happier, because their mechanical systems will be returned to service earlier. That means you'll be more likely to get their repeat business.

The Armstrong replacement parts program serves contractors and end customers through a combination of: Availability, Easy Selection, Easy Transactions, Quick Delivery and Technical Support.

AVAILABILITY

- Dedicated service parts inventory
- Real-time inventory information
- Active channel inventory management

EASY SELECTION

- Parts selection charts with updated descriptions, pictures and sizing details
- Illustrated part selection information
- Product details on packaging
- All items within each Parts Kit are carefully selected for accurate sizing

EASE OF TRANSACTION

- Parts and Kits available in [ADEPT](#) Locator tool for local parts dealers
- Complete parts kits reduce the work to source items.
- One search and one order address a service issue

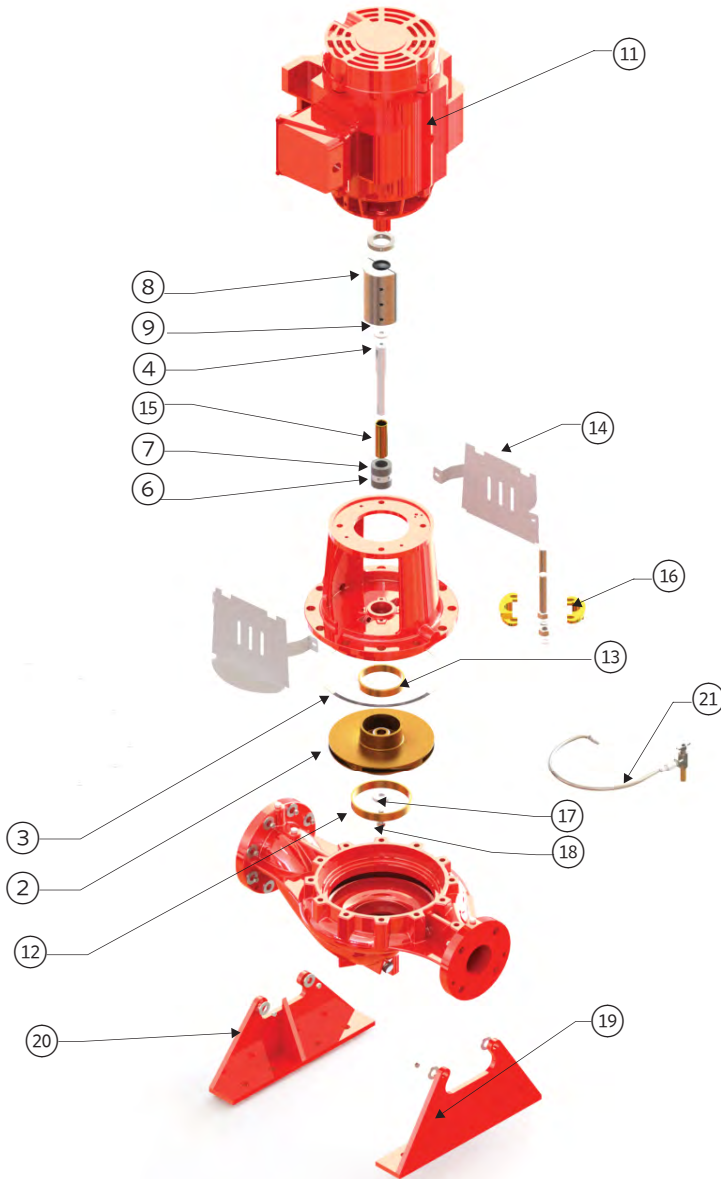
QUICK DELIVERY OF PARTS SOLUTIONS

- On-time shipment
- Options for shipping service levels
- Parts Kits include all parts and related items required to complete replacement work

SUPPORT

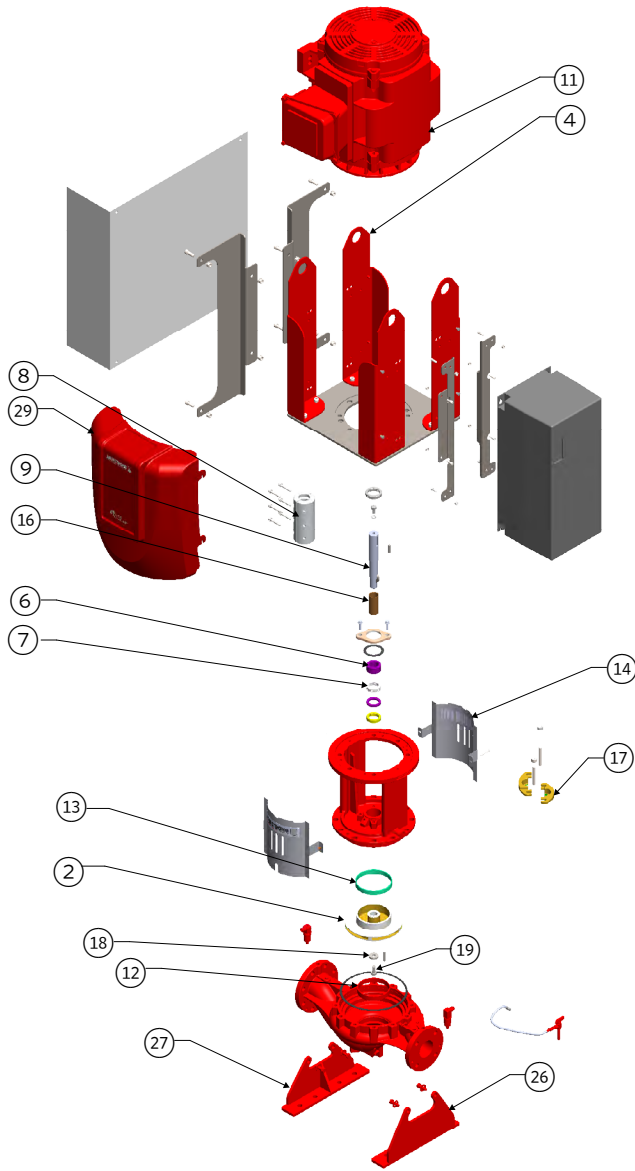
- Trained Armstrong support professionals
- Dedicated 24x7 service and support parts

43PF FIXED SPEED PARTS LIST



ITEM	DESCRIPTION
③	Casing Gasket
⑫	Casing Wear Ring
⑭	Coupling Guards
⑰	Discharge Foot Support
⑳	Flush Line Kit
⑯	Gland Split
②	Impeller
⑱	Impeller Capscrew
⑰	Impeller Washer
⑦	Lantern Ring
⑪	Motor
⑥	Packing Ring
⑬	Pedestal Wear Ring
⑨	Shaft Collar
⑮	Sleeve
⑧	Split Coupling
⑳	Suction Foot Support

DE 43PF SRVSFPU- PARTS LIST



ITEM	DESCRIPTION
⑫	Casing Wear Ring
⑧	Coupling
⑭	Coupling Guards
⑫⑥	Discharge Foot Support
⑫⑦	Gland Split
⑫②	Impeller
⑫⑨	Impeller Capscrew
⑫⑧	Impeller Washer
⑫⑦	Lantern Ring
⑫⑪	Motor
⑫⑨	Motor Shroud
⑫⑥	Packing Ring
⑫⑩	Pedestal Wear Ring
⑫⑨	Shaft Collar
⑫⑥	Sleeve
⑫⑦	Suction Foot Support
⑫④	VFD Bracket

FLUSH LINE KIT



KIT CONTENTS

- Nipple
- Tee-90°
- Air vent
- Adapter-S
- Braided hose-assy

KIT PART NUMBERS

PUMP SIZE	PART NUMBER	QTY REQUIRED
4×3×9	800403-001K	1
5×4×9*	—	—
6×5×9*	—	—
4×3×10*	—	—
5×4×10*	—	—
6×5×10*	—	—
8×6×18*	—	—
5×3×11*	—	—
5×4×11*	—	—
6×5×11*	—	—
8×6×11*	—	—

CASING GASKET

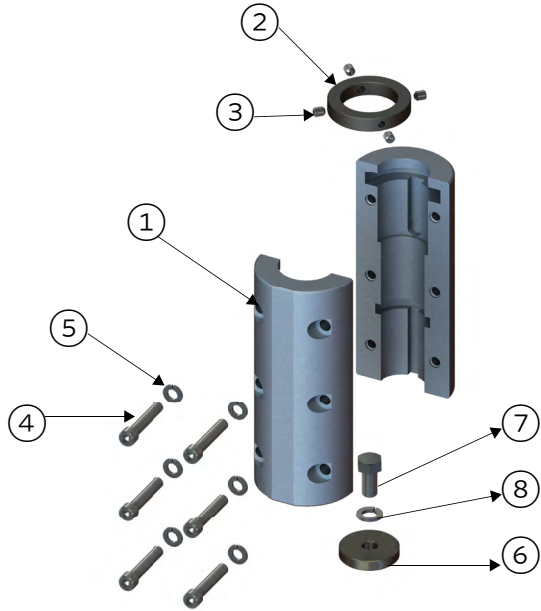


KIT PART NUMBERS

PUMP SIZE	PART NUMBER	QTY REQUIRED
4×3×9	8426401-004	1
5×4×9*	—	—
6×5×9*	—	—
4×3×10*	—	—
5×4×10*	—	—
6×5×10*	—	—
8×6×18*	—	—
5×3×11*	—	—
5×4×11*	—	—
6×5×11*	—	—
8×6×11*	—	—

NOTE: * Models are pending approval from UL Listing.
Kit is common for F, LF, MF, HF, PF, NF models

COUPLING KIT



KIT CONTENTS

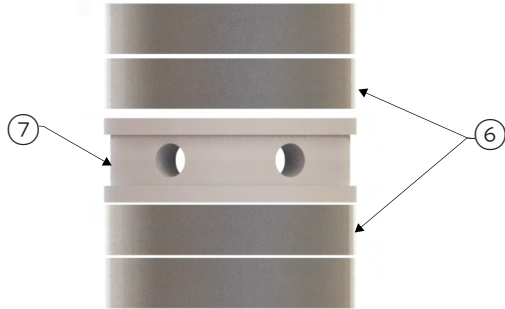
ITEM	DESCRIPTION
④	Capscrew
⑦	Collar Screw
⑧	Collar Washer
⑤	Lock Washer
②	Motor Collar
⑥	Pump Collar
①	Split Coupling
③	Set screw

KIT PART NUMBERS

PUMP SIZE	MOTOR FRAME	PART NUMBER	QTY REQUIRED
4×3×9	254TC-256TC	8427734-000K	1
	284TSC- 286TSC	8427735-000K	1
	324TSC - 326TSC	8427737-000K	1
	364TSC - 365TSC	8427737-000K	1
5×4×9*	—	—	—
6×5×9*	—	—	—
4×3×10*	—	—	—
5×4×10*	—	—	—
6×5×10*	—	—	—
8×6×18*	—	—	—
5×3×11*	—	—	—
5×4×11*	—	—	—
6×5×11*	—	—	—
8×6×11*	—	—	—

NOTE: * Models are pending approval from UL Listing.
Kit is common for F, LF, MF, HF, PF, NF models

PACKING RING KIT



KIT CONTENTS

ITEM	DESCRIPTION	QTY
⑥	Packing Ring	4
⑦	Lantern Ring-Teflon	1

PACKING RING KIT SELECTION TABLE-60HZ

PUMP SIZE	MOTOR FRAME		PART NUMBER	QTY REQUIRED
4×3×9	254TC	256TC	800403-002K	1
4×3×9	284TSC	286TSC	800403-003K	1
4×3×9	324TSC	326TSC	800403-003K	1
4×3×9	364TSC	365TSC	800403-003K	1
5×4×9*	324TSC	326TSC	—	—
5×4×9*	364TSC	365TSC	—	—
5×4×9*	404TSC	405TSC	—	—
6×5×9*	324TSC	326TSC	—	—
6×5×9*	364TSC	365TSC	—	—
6×5×9*	404TSC	405TSC	—	—
4×3×10*	324TSC	326TSC	—	—
4×3×10*	364TSC	365TSC	—	—
5×4×10*	364TSC	365TSC	—	—
5×4×10*	404TSC	405TSC	—	—
6×5×10*	364TSC	365TSC	—	—
6×5×10*	404TSC	405TSC	—	—
6×5×10*	444TSC	445TSC	—	—
8×6×18*	364TC	365TC	—	—
8×6×18*	404TC	405TC	—	—
8×6×18*	444TC	445TC	—	—

NOTE: * Models are pending approval from UL Listing.
Kit is common for F, LF, MF, HF, PF, NF models

PACKING RING KIT SELECTION TABLE-50HZ

PUMP SIZE	MOTOR FRAME		PART NUMBER	QTY REQUIRED
5×3×11*	284TSC	286TSC	—	—
5×3×11*	324TSC	326TSC	—	—
5×3×11*	364TSC	365TSC	—	—
5×3×11*	404TSC	405TSC	—	—
5×4×11*	324TSC	326TSC	—	—
5×4×11*	364TSC	365TSC	—	—
5×4×11*	404TSC	405TSC	—	—
6×5×11*	N/A	326TSC	—	—
6×5×11*	364TSC	365TSC	—	—
6×5×11*	404TSC	405TSC	—	—
8×6×11*	—	—	—	—

SHROUD

SHROUD PARTS SELECTION TABLE-60HZ

PUMP SIZE	MOTOR FRAME		PART NUMBER	QTY REQUIRED
4×3×9PF	254TC	256TC	8429019-000	1
4×3×9PF	284TSC	286TSC	8429019-000	1
4×3×9PF	324TSC	326TSC	8429020-000	1
4×3×9PF	364TSC	365TSC	8429020-000	1
5×4×9*	324TSC	326TSC	—	—
5×4×9*	364TSC	365TSC	—	—
5×4×9*	404TSC	405TSC	—	—
6×5×9*	324TSC	326TSC	—	—
6×5×9*	364TSC	365TSC	—	—
6×5×9*	404TSC	405TSC	—	—
4×3×10*	324TSC	326TSC	—	—
4×3×10*	364TSC	365TSC	—	—
5×4×10*	364TSC	365TSC	—	—
5×4×10*	404TSC	405TSC	—	—
6×5×10*	364TSC	365TSC	—	—
6×5×10*	404TSC	405TSC	—	—
6×5×10*	444TSC	445TSC	—	—
8×6×18*	364TC	365TC	—	—
8×6×18*	404TC	405TC	—	—
8×6×18*	444TC	445TC	—	—

KIT CONTENTS

DESCRIPTION	QTY
Shroud	1



NOTE: * Models are pending approval from UL Listing.
Kit is common for F, LF, MF, HF, PF, NF models

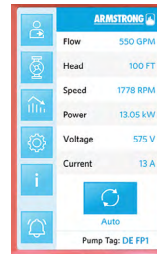
DEFC PARTS KIT WITHOUT BEZEL

KIT PART NUMBERS

PUMP SIZE	PART NUMBER	QTY REQUIRED
4×3×9PF	8428629-100K	1
5×4×9*	—	—
6×5×9*	—	—
4×3×10*	—	—
5×4×10*	—	—
6×5×10*	—	—
8×6×18*	—	—
5×3×11*	—	—
5×4×11*	—	—
6×5×11*	—	—
8×6×11*	—	—

KIT CONTENTS

DESCRIPTION	QTY
LCD Resistive Touch Screen	1
Holder	1
PCB board	1
Support foam	1
Display guard	1
Program	—



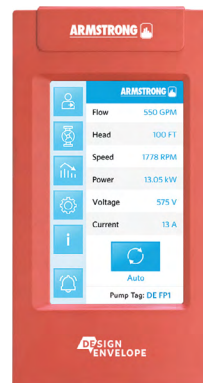
DEFC PARTS KIT BEZEL

KIT PART NUMBERS

PUMP SIZE	PART NUMBER	QTY REQUIRED
4×3×9PF	8428981-000K	1
5×4×9*	—	—
6×5×9*	—	—
4×3×10*	—	—
5×4×10*	—	—
6×5×10*	—	—
8×6×18*	—	—
5×3×11*	—	—
5×4×11*	—	—
6×5×11*	—	—
8×6×11*	—	—

KIT CONTENTS

DESCRIPTION	QTY
LCD Resistive Touch Screen	1
Holder	1
PCB board	1
Support foam	1
Display guard	1
Bezel parts	1
Program	—



NOTE: * Models are pending approval from UL Listing.
Kit is common for F, LF, MF, HF, PF, NF models

TORONTO

23 BERTRAND AVENUE,
TORONTO, ONTARIO,
CANADA, M1L 2P3
+1 416 755 2291

BUFFALO

93 EAST AVENUE, NORTH
TONAWANDA, NEW YORK,
USA, 14120-6594
+1 716 693 8813

DROITWICH SPA

POINTON WAY, STONEBRIDGE CROSS
BUSINESS PARK, DROITWICH SPA,
WORCESTERSHIRE,
UNITED KINGDOM, WR9 0LW
+44 121 550 5333

MANCHESTER

WOLVERTON STREET, MANCHESTER
UNITED KINGDOM, M11 2ET
+44 161 223 2223

BANGALORE

#18, LEWIS WORKSPACE, 3RD FLOOR,
OFF MILLERS - NANDIDURGA ROAD,
JAYAMAHAL CBD, BENSON TOWN,
BANGALORE, INDIA 560 046
+91 80 4906 3555

SHANGHAI

UNIT 903, 888 NORTH SICHUAN RD.
HONGKOU DISTRICT, SHANGHAI
CHINA, 200085
+86 21 5237 0909

BEIJING

ROOM 1612, NANYIN BUILDING NO.2
NORTH EAST THRID RING ROAD
CHAOYANG DISTRICT, BEIJING,
CHINA 100027
+86 21 5237 0909

SÃO PAULO

RUA JOSÉ SEMIÃO RODRIGUES
AGOSTINHO, 1370 GALPÃO 6 EMBU
DAS ARTES, SAO PAULO, BRAZIL
+55 11 4785 1330

LYON

93 RUE DE LA VILLETTE
LYON, 69003 FRANCE
+33 4 20 10 26 21

DUBAI

JAFZA VIEW 19, OFFICE 402
P.O. BOX 18226 JAFZA,
DUBAI - UNITED ARAB EMIRATES
+971 4 887 6775

JIMBOLIA

STR CALEA MOTILOR NR. 2C
JIMBOLIA 305400, JUD.TIMIS
ROMANIA
+40 256 360 030

FRANKFURT

WESTERBACHSTRASSE 32,
D-61476 KRONBERG IM TAUNUS
GERMANY
+49 6173 999 77 55

FOR SERVICE RELATED PARTS & KITS

Use ADEPT Select to quickly and easily select.

Visit adept.armstrongfluidtechnology.com to learn more

