



Design Envelope EVERCOOL™

Data Center Cooling Automation Solutions

Parts list

File No: 6012.130

Date: DECEMBER, 30, 2021

Supersedes: NEW

Date: NEW

—

—

—

—

CONTENTS

INTRODUCTION	4
EVERCOOL CONTROLLER PARTS LIST	5
PRIMARY PLC (MASTER OR HOT-STANDBY)	7
INDUSTRIAL ETHERNET SWITCH, MRP MASTER	7
FLASH FOR MRP MASTER FUNCTION	7
15.6" TOUCHSCREEN HMI	7
JACE PLC	7
JACE PLC - MEMORY CARD	8
JACE PLC-BRANDING CLIP	8
JACE LICENSE-CORE	8
JACE LICENSE-MAINTENANCE	8
BUS COUPLER	8
SERIAL COMMUNICATION MODULE	
RS 485/RS-232	8
AI MODULE	8
AO MODULE	8
DI MODULE	9
DO MODULE	9
POWER SUPPLY, 24CD, 10A, 240W	9
REDUNDANCY DIODE	9
VPN ROUTER	9
FORM C RELAY MODULE, TERMINAL BLOCK TYPE	9
POWER COMMAND RELAY	10
POSITION FEEDBACK RELAY	10
DC SWITCH RELAY, 12A, 24VDC	10
MAIN CIRCUIT BREAKER, 230VAC, 30A	10
MINIATURE CIRCUIT BREAKER, 16A, 2POLE	10
MINIATURE CIRCUIT BREAKER, 5A, 2POLE	10
VALVE CONTROL CIRCUIT BREAKER, 2A, 1 POLE	11
VALVE FEED CIRCUIT BREAKER,230VAC, 25A	11
VALVE CIRCUIT BREAKER, 230VAC, 15A	11

INTRODUCTION

Armstrong was founded on the core values of Community, Service, Learning and Innovation. Reflecting our commitment to service, Armstrong now provides 360 Service and Support. Working collaboratively with the 'partner' companies in our network, we're ready to provide the service and support that customers need in relation to building performance.

A key part of serving our customers is providing Genuine Armstrong Replacement Parts to support installations of our products. But the value we provide goes beyond the quality of the replacement part.

With the availability of parts in packaged kits, you'll never have to leave a repair incomplete just because you didn't have all the pieces required for the job. And you won't have to pay a premium for rush delivery of additional parts.

Your customers will be happier, because their mechanical systems will be returned to service earlier. That means you'll be more likely to get their repeat business.

The Armstrong replacement parts program serves contractors and end customers through a combination of: Availability, Easy Selection, Easy Transactions, Quick Delivery and Technical Support.

AVAILABILITY

- Dedicated service parts inventory
- Real-time inventory information
- Active channel inventory management

EASY SELECTION

- Parts selection charts with updated descriptions, pictures and sizing details
- Illustrated part selection information
- Product details on packaging
- All items within each Parts Kit are carefully selected for accurate sizing

EASE OF TRANSACTION

- Parts and Kits available in [ADEPT](#) Locator tool for local parts dealers
- Complete parts kits reduce the work to source items.
- One search and one order address a service issue

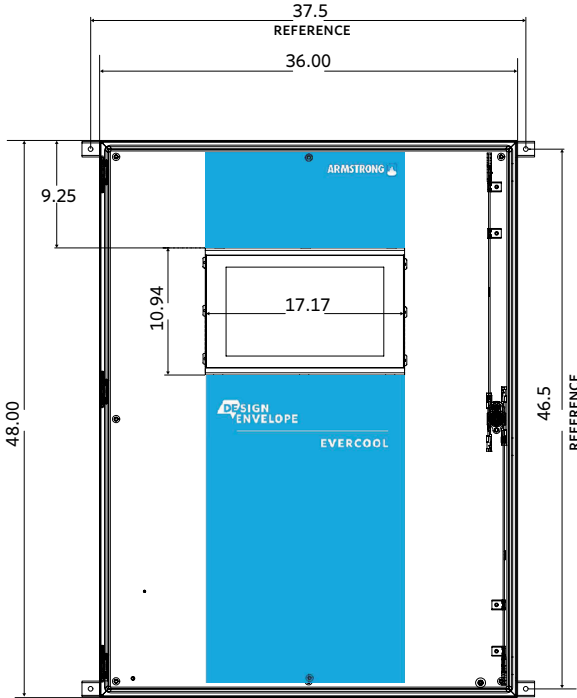
QUICK DELIVERY OF PARTS SOLUTIONS

- On-time shipment
- Options for shipping service levels
- Parts Kits include all parts and related items required to complete replacement work

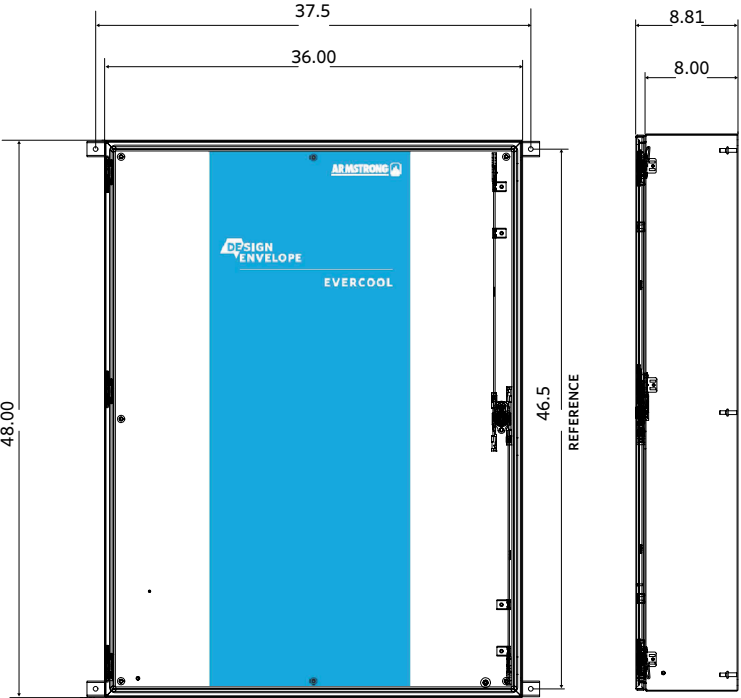
SUPPORT

- Trained Armstrong support professionals
- Dedicated 24x7 service and support parts

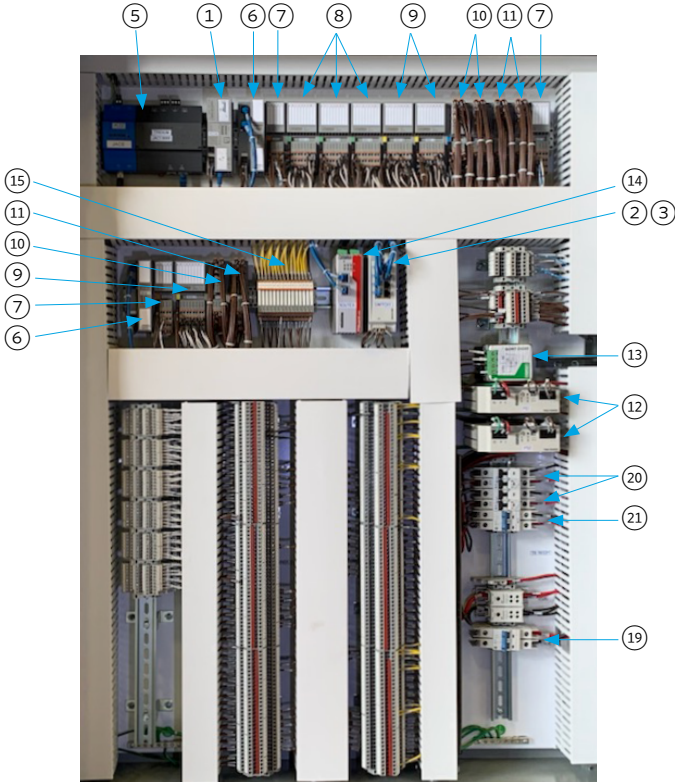
EVERCOOL CONTROLLER PARTS LIST



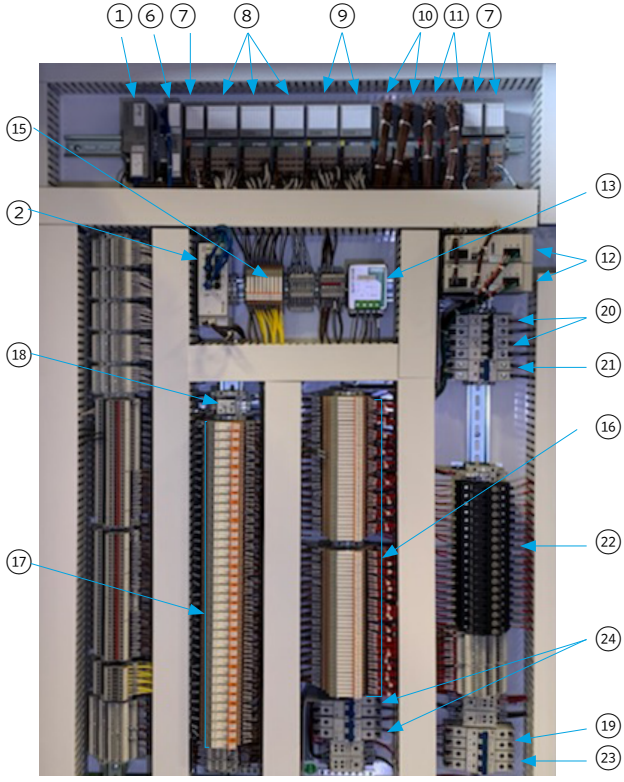
PANEL A - WITH HMI



PANEL B - NO HMI



PANEL A - WITH HMI



PANEL B - NO HMI

6

ITEM	DESCRIPTION
①	Primary PLC (Master or Hot-standby)
②	Industrial Ethernet Switch, MRP Master
③	Flash for MRP Master function
④	15.6" Touchscreen HMI
⑤	JACE PLC
⑥	JACE PLC - Memory Card
⑦	JACE PLC - branding clip
⑧	JACE license-Core
⑨	JACE license-Maintenance
⑩	Bus Coupler
⑪	Serial Communication Module RS-485/RS-232
⑫	AI module
⑬	AO module
⑭	DI module
⑮	DO module
⑯	Power Supply, 24DC, 10A, 240W
⑰	Redundancy Diode
⑱	VPN Router
⑲	Form C Relay Module, Terminal Block Type
⑳	Power Command Relay
㉑	Position Feedback Relay
㉒	DC Switch Relay, 12 A, 24VDC
㉓	Main circuit breaker, 230VAC, 30A
㉔	Miniature circuit breaker, 16A, 2 pole
㉕	Miniature circuit breaker, 5A, 2 pole
㉖	Valve control circuit breaker, 2A, 1 Pole
㉗	Valve feed circuit breaker, 230VAC, 25A
㉘	Valve circuit breaker, 230VAC, 15A

NOTE:

1. Parts and Quantity may vary per project. Reference the panel electrical drawing for more information. Please consult Armstrong before ordering parts.

PRIMARY PLC (MASTER OR HOT-STANDBY)

ITEM	PART NUMBER	DESCRIPTION
① †*	84500252-000	Primary PLC (Master or Hot-standby)



INDUSTRIAL ETHERNET SWITCH, MRP MASTER

ITEM	PART NUMBER	DESCRIPTION
② †*	84500252-301	Industrial Ethernet Switch, MRP Master



NOTE:

- † For replacement, provide serial number necessary to match program to site specification.
- * Each module has unique address, need to be pre-configured with correct firmware/configuration, labelled/tagged the module #, before shipping

FLASH FOR MRP MASTER FUNCTION

ITEM	PART NUMBER	DESCRIPTION
③	84500252-302	Flash for MRP Master function



15.6" TOUCHSCREEN HMI

ITEM	PART NUMBER	DESCRIPTION
④	84500252-500	15.6" Touchscreen HMI



JACE PLC

ITEM	PART NUMBER	DESCRIPTION
⑤	84500249-101	JACE PLC



8

JACE PLC - MEMORY CARD

ITEM	PART NUMBER	DESCRIPTION
⑥	84500249-102	JACE PLC - Memory Card

**JACE PLC-BRANDING CLIP**

ITEM	PART NUMBER	DESCRIPTION
⑦	84500249-103	JACE PLC - branding clip

JACE LICENSE-CORE

ITEM	PART NUMBER	DESCRIPTION
⑧	84500249-303	JACE license-Core

JACE LICENSE-MAINTENANCE

ITEM	PART NUMBER	DESCRIPTION
⑨	84500249-503	JACE license-Maintenance

BUS COUPLER

ITEM	PART NUMBER	DESCRIPTION
⑩†*	84500252-100	Bus Coupler

**NOTE:**

† For replacement, provide serial number necessary to match program to site specification.

* Each module has unique address, need to be pre-configured with correct firmware/configuration, labelled/tagged the module #, before shipping

**SERIAL COMMUNICATION MODULE
RS 485/RS-232**

ITEM	PART NUMBER	DESCRIPTION
⑪†*	84500252-101	Serial Communication Module RS 485/RS-232

**AI MODULE**

ITEM	PART NUMBER	DESCRIPTION
⑫	84500252-102	AI module

**AO MODULE**

ITEM	PART NUMBER	DESCRIPTION
⑬	84500252-103	AO module



DI MODULE

ITEM	PART NUMBER	DESCRIPTION
14	84500252-104	DI module



DO MODULE

ITEM	PART NUMBER	DESCRIPTION
15	84500252-105	DO module



POWER SUPPLY, 24CD, 10A, 240W

ITEM	PART NUMBER	DESCRIPTION
16	84500252-401	Power Supply, 24DC, 10A, 240W



REDUNDANCY DIODE

ITEM	PART NUMBER	DESCRIPTION
17	84500252-420	Redundancy Diode



VPN ROUTER

ITEM	PART NUMBER	DESCRIPTION
18†*	84500252-300	VPN Router



NOTE:

† For replacement, provide serial number necessary to match program to site specification.

* Each module has unique address, need to be pre-configured with correct firmware/configuration, labelled/tagged the module #, before shipping

FORM C RELAY MODULE, TERMINAL BLOCK TYPE

ITEM	PART NUMBER	DESCRIPTION
19	84500252-450	Form C Relay Module, Terminal Block Type



POWER COMMAND RELAY

ITEM	PART NUMBER	DESCRIPTION
20**	84500252-451	Power Command Relay



POSITION FEEDBACK RELAY

ITEM	PART NUMBER	DESCRIPTION
21**	84500252-452	Position Feedback Relay



DC SWITCH RELAY, 12A, 24VDC

ITEM	PART NUMBER	DESCRIPTION
22**	84500252-453	DC Switch Relay, 12A, 24VDC



MAIN CIRCUIT BREAKER, 230VAC, 30A

ITEM	PART NUMBER	DESCRIPTION
23	84500252-454	Main circuit breaker, 230VAC, 30A



MINIATURE CIRCUIT BREAKER, 16A, 2POLE

ITEM	PART NUMBER	DESCRIPTION
24	84500252-455	Miniature circuit breaker, 16A, 2 pole



MINIATURE CIRCUIT BREAKER, 5A, 2POLE

ITEM	PART NUMBER	DESCRIPTION
25	84500252-456	Miniature circuit breaker, 5A, 2 pole



NOTE:

** This component may or may not be included in your equipment. Please contact Armstrong for more information.

VALVE CONTROL CIRCUIT BREAKER, 2A, 1 POLE

ITEM	PART NUMBER	DESCRIPTION
26**	84500252-457	Valve control circuit breaker, 2A, 1 Pole



NOTE:

** This component may or may not be included in your equipment. Please contact Armstrong for more information.

VALVE FEED CIRCUIT BREAKER, 230VAC, 25A

ITEM	PART NUMBER	DESCRIPTION
27**	84500252-458	Valve feed circuit breaker, 230VAC, 25A



VALVE CIRCUIT BREAKER, 230VAC, 15A

ITEM	PART NUMBER	DESCRIPTION
28**	84500252-459	Valve circuit breaker, 230VAC, 15A



TORONTO

23 BERTRAND AVENUE
TORONTO, ONTARIO
CANADA, M1L 2P3
+1 416 755 2291

BUFFALO

93 EAST AVENUE
NORTH TONAWANDA, NEW YORK
U.S.A., 14120-6594
+1 716 693 8813

DROITWICH SPA

POINTON WAY,
STONEBRIDGE CROSS BUSINESS PARK
DROITWICH SPA, WORCESTERSHIRE
UNITED KINGDOM, WR9 0LW
+44 8444 145 145

MANCHESTER

WOLVERTON STREET
MANCHESTER
UNITED KINGDOM, M11 2ET
+44 8444 145 145

BANGALORE

#59, FIRST FLOOR, 3RD MAIN
MARGOSA ROAD, MALLESWARAM
BANGALORE, INDIA, 560 003
+91 80 4906 3555

SHANGHAI

UNIT 903, 888 NORTH SICHUAN RD.
HONGKOU DISTRICT, SHANGHAI
CHINA, 200085
+86 21 5237 0909

SÃO PAULO

RUA JOSÉ SEMIÃO RODRIGUES AGOSTINHO,
1370 GALPÃO 6 EMBU DAS ARTES
SAO PAULO, BRAZIL
+55 11 4785 1330

LYON

93 RUE DE LA VILLETTE
LYON, 69003 FRANCE
+33 4 26 83 78 74

DUBAI

JAFZA VIEW 19, OFFICE 402
P.O. BOX 18226 JAFZA,
DUBAI - UNITED ARAB EMIRATES
+971 4 887 6775

MANNHEIM

DYNAMOSTRASSE 13
68165 MANNHEIM
GERMANY
+49 621 3999 9858

JIMBOLIA

STR CALEA MOTILOR NR. 2C
JIMBOLIA 305400, JUD.TIMIS
ROMANIA
+40 256 360 030

ARMSTRONG FLUID TECHNOLOGY
ESTABLISHED 1934

FOR SERVICE RELATED PARTS & KITS

Use ADEPT Select to quickly and easily select.

Visit adept.armstrongfluidtechnology.com to learn more



ARMSTRONGFLUIDTECHNOLOGY.COM