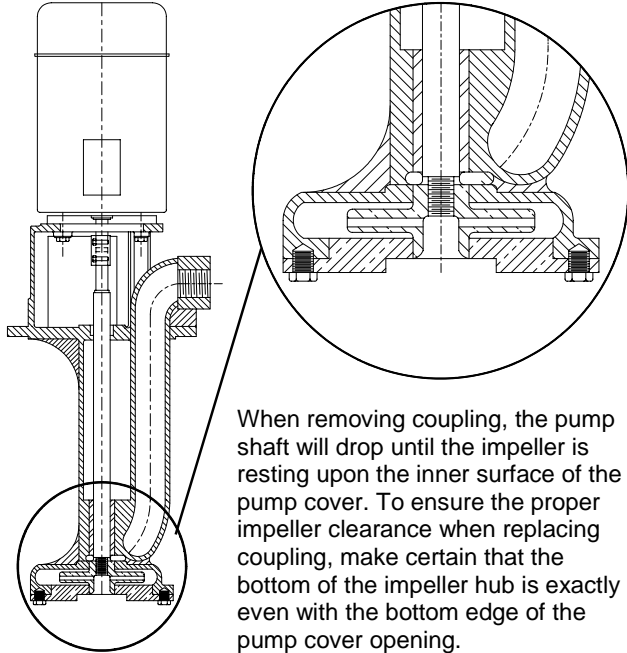


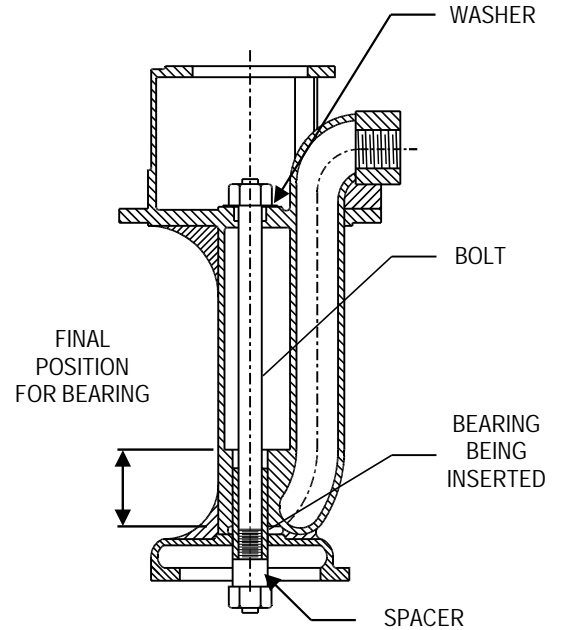
# ARMSTRONG®

## MAINTENANCE INSTRUCTIONS

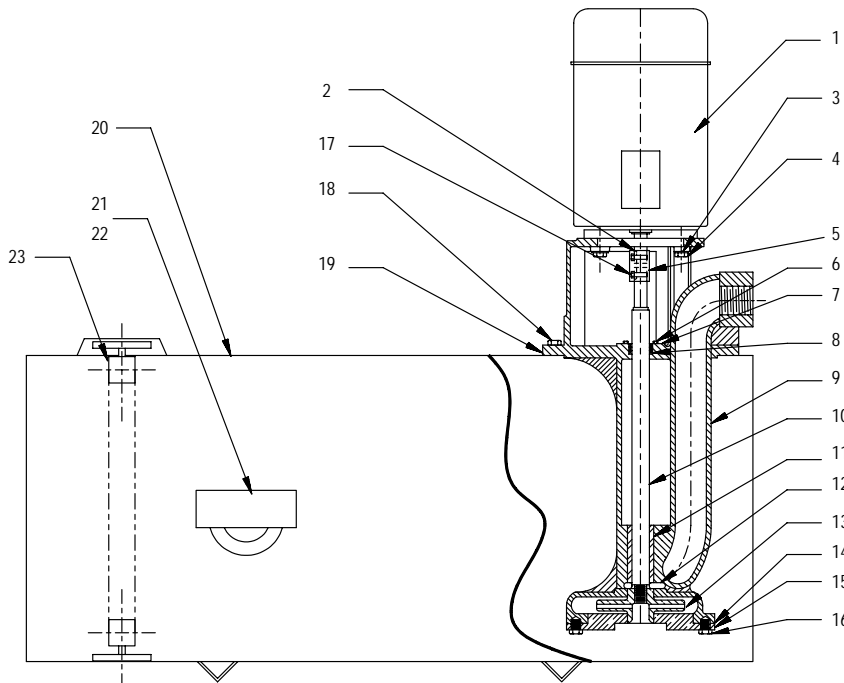
### POSITIONING IMPELLER



### REPLACING LOWER BEARING



### TYPICAL SECTION OF UNICON PUMP & ACCESSORIES



NUMBER	DESCRIPTION
1	MOTOR
2	KEY
3	LOCK WASHERS
4	CAP SCREWS - STUFFING BOX
5	COUPLING
6	CAP SCREWS
7	STUFFING BOX COVER
8	PACKING
9	CASING
10	SHAFT
11	BEARING
12	ADAPTOR
13	IMPELLER
14	GASKET - BOTTOM COVER
15	SUCTION COVER
16	CAP SCREW - BOTTOM COVER
17	CAP SCREW - COUPLING
18	NUTS
19	GASKET - TANK
20	TANK
21	FLOAT SWITCH - TYPE 1
22	ALTERNATOR - TYPE 1
23	SIGHT GLASS - OPTIONAL

**S.A. Armstrong Limited**  
 23 Bertrand Avenue  
 Toronto, Ontario  
 Canada, M1L 2P3  
 Tel: (416) 755-2291  
 Fax: (416) 759-9101

**Armstrong Pumps Limited**  
 Peartree Road, Stanway  
 Colchester, Essex  
 United Kingdom, C03 5JX  
 Tel: 01206-579491  
 Fax: 01206-760532



**Armstrong Pumps Inc.**  
 93 East Avenue  
 Buffalo, New York  
 U.S.A. 14120-6594  
 Tel: (716) 693-8813  
 Fax: (716) 693-8970

**Armstrong Darling Inc.**  
 2200 Place Transcanadienne  
 Montreal, Quebec  
 Canada, H9P 2X5  
 Tel: (514) 421-2424  
 Fax: (514) 421-2436