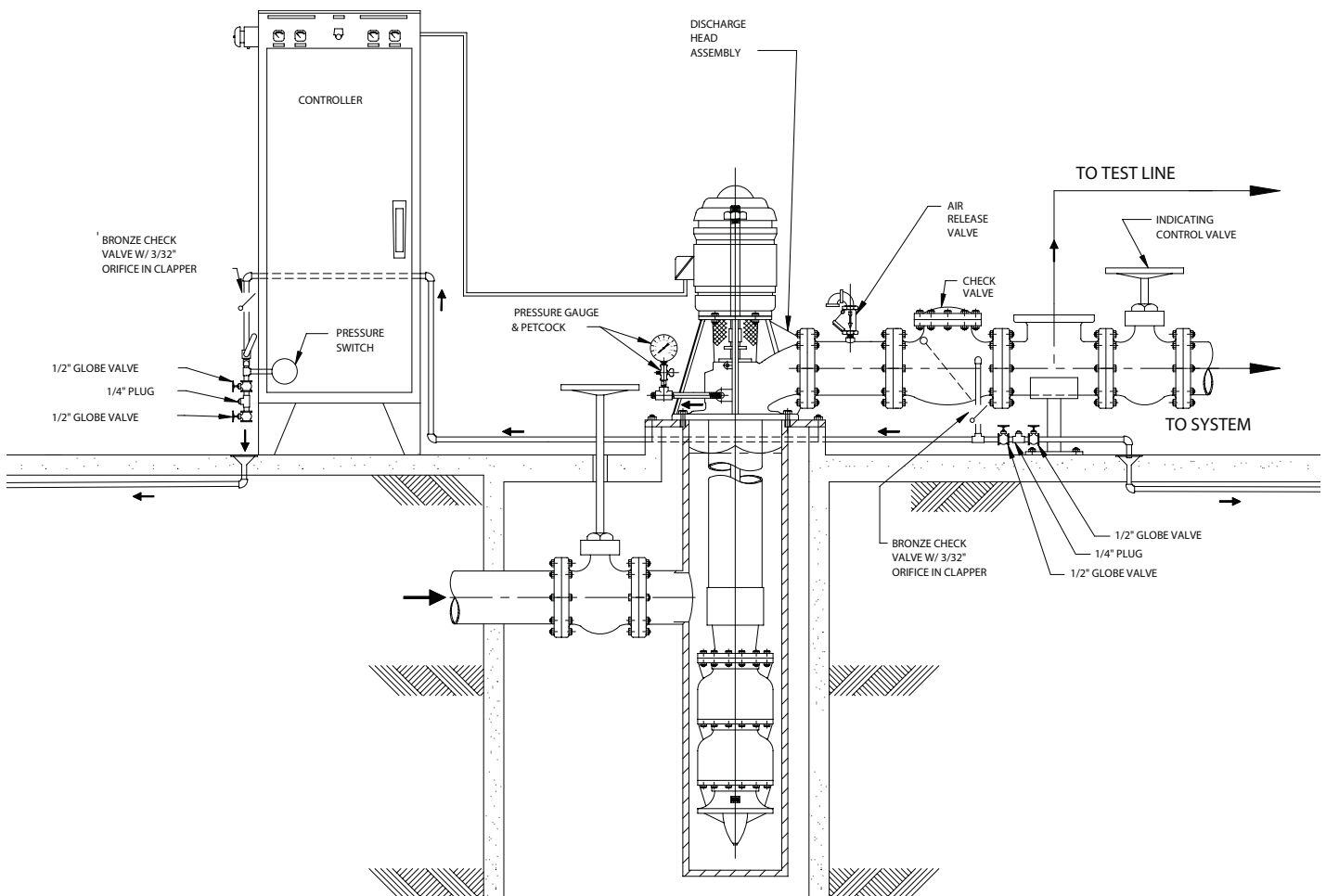


TYPICAL FIRE PUMP INSTALLATION WITH AN ARMSTRONG VERTICAL TURBINE CAN FIRE PUMP ELECTRIC MOTOR DRIVEN



NOTE:

1. Linear measured distance between the two check valves containing 3/32" orifice shall not be less than 5' - 0" per NFPA20.

S. A. Armstrong Limited
23 Bertrand Avenue
Toronto, Ontario
Canada, M1L 2P3
T: (416) 755-2291
F (Main): (416) 759-9101

Armstrong Pumps Inc.
93 East Avenue
North Tonawanda, New York
U.S.A., 14120-6594
T: (716) 693-8813
F: (716) 693-8970

Armstrong Holden Brooke Pullen
Wenlock Way
Manchester
United Kingdom, M12 5JL
T: +44 (0) 1612 232223
F: +44 (0) 1612 209660