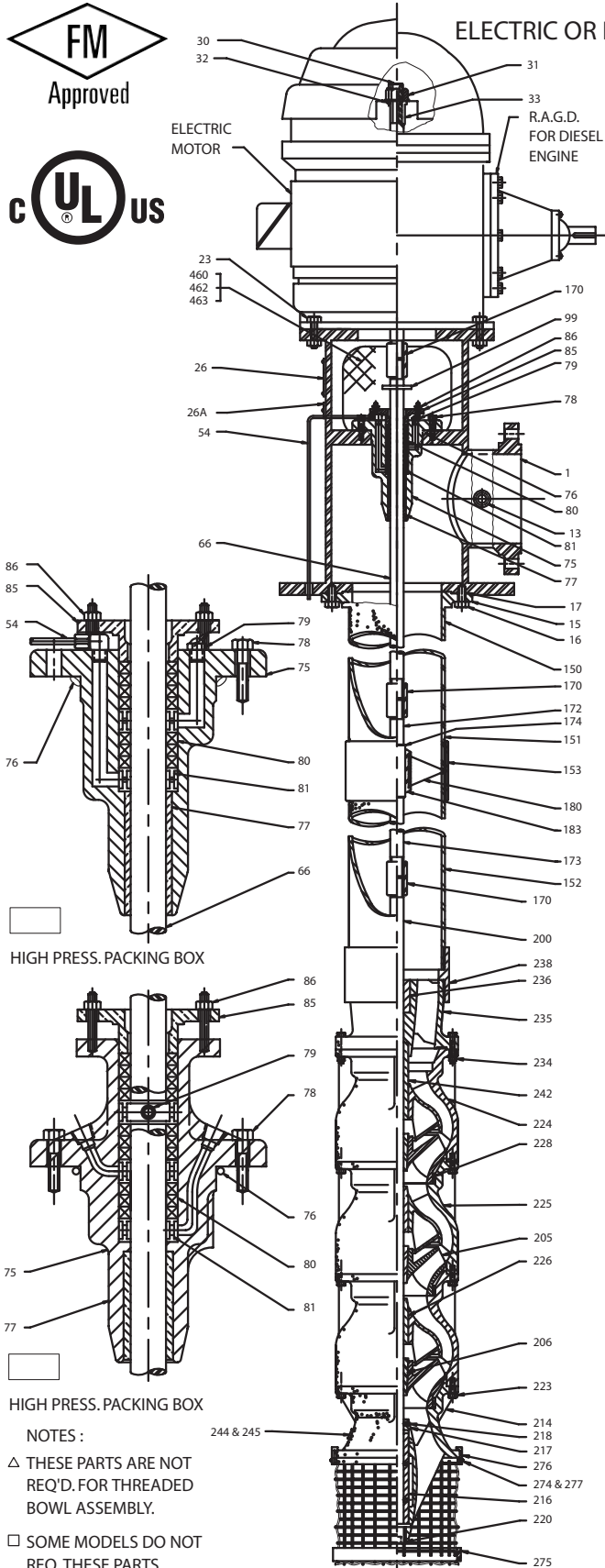


Vertical Turbine Fire Pump - Sectional Arrangement Drawing



FM UL NFPA-20 ONLY

REF. NO.	PART	MATERIAL
1	DISCHARGE HEAD	FAB. STEEL
13	PIPE PLUG	STEEL
16	TOP COLUMN FLANGE CAP SCREWS	A 307 GR.2
17	TOP COLUMN FLANGE GASKET	VELLUMOID
23	DRIVER BOLTS & NUTS	STEEL
26	NAMEPLATE WITH DRIVER SCREWS	STAINLESS STEEL
26A	WARNING NAMEPLATE WITH DRIVER SCREWS	STAINLESS STEEL
30	HEAD SHAFT	A 582-416 S.S.
31	HEAD SHAFT NUT	B 584-838 BRZ.
32	HEAD SHAFT NUT LOCK SCREW	STEEL
33	GIB KEY	1020 STEEL
54	BY-PASS LINE WITH FITTINGS	COPPER / S.S.
66	TOP LINE SHAFT	A 582-416 S.S.
75	STUFFING BOX	A 48-CL.30 C.I.
76	STUFFING BOX "O" RING	BUNA N
77	STUFFING BOX BEARING	B 505-932 BRZ.
78	STUFFING BOX CAP SCREWS	STEEL
79	GREASE ZERK WITH COVER	STEEL
80	PACKING RINGS	J.C. 1340
81	LANTERN RING	B 584-932 BRZ.
85	PACKING GLAND	B 584-838 BRZ.
86	PACKING GLAND STUDS & NUTS	303 S.S.
99	SLINGER	NEOPRENE
150	TOP COLUMN PIPE	A 53 GR.B
151	INTERMEDIATE COLUMN PIPE	A 53 GR.B
152	BOTTOM COLUMN PIPE	A 53 GR.B
153	COLUMN PIPE COUPLING	A 53 GR.B
170	LINE SHAFT COUPLING	A 108-1215 STL
172	INTERMEDIATE LINE SHAFT	A108 GR.1045STL/416S.S.
173	BOTTOM LINE SHAFT	A108 GR.1045STL/416S.S.
174	LINE SHAFT SLEEVE	304 S.S.
180	BEARING RETAINER	A536-GR60 D.I.
183	LINE SHAFT BEARING	NEOPRENE
200	BOWL SHAFT	A 582-416 S.S.
205	IMPELLER	B 584-838 BRZ.
206	IMPELLER COLLET	A 108-1215 STL
214	SUCTION BELL	A 48-CL. 30 C.I.
216	SUCTION BELL BEARING	B 505-932 BRZ.
217	SAND COLLAR	B 584-838 BRZ.
218	COLLAR SET SCREW	303 S.S.
220	PIPE PLUG (BELL)	A 48-CL. 30 C.I.
223	BOWL CAP SCREWS SET	A 307 GR.2
224	TOP BOWL	A 48-CL.30 C.I.E./D.I.
225	INTERMEDIATE BOWL	A 48-CL.30 C.I.E./D.I.
226	BOWL BEARING	B 505-932 BRZ.
228	BOWL WEAR RING	B 505-943/954 BRZ.
234	DISCHARGE CASE CAP SCREWS SET	A 307 GR.2
235	DISCHARGE CASE	A 48-CL. 30 C.I.
236	DISCHARGE CASE BEARING	B 505-932 BRZ.
238	COLUMN ADAPTOR	A 48-CL. 30 C.I.
242	THROTTLE BEARING	B 505-932 BRZ.
244	BOWL NAMEPLATE	BRASS
245	NAMEPLATE DRIVER SCREWS	NIC PLT STEEL
274	STRAINER LOCK WASHERS	410 S.S.
275	STRAINER	RED BRASS
276	STRAINER CLIPS	316 S.S.
277	STRAINER SCREWS	303 S.S.
460	COUPLING GUARDS	GALV. STEEL
462	COUPLING GUARD CAP SCREWS	PLTD STEEL
463	COUPLING GUARD WASHERS	GR. A STEEL

△
 △
 □
 □
 □

HIGH PRESS. PACKING BOX

HIGH PRESS. PACKING BOX

NOTES :
 △ THESE PARTS ARE NOT REQ'D. FOR THREADED BOWL ASSEMBLY.
 □ SOME MODELS DO NOT REQ. THESE PARTS.

JOB NAME. _____
 ITEM NO. _____
 CUSTOMER _____
 ORDER NO. _____
 MFG. REP. _____
 DWG. NO. _____
 SERIAL NO. _____

NOT TO BE USED FOR CONSTRUCTION UNLESS CERTIFIED

By : _____ Date : _____

FPSECF02 (REV.#3)