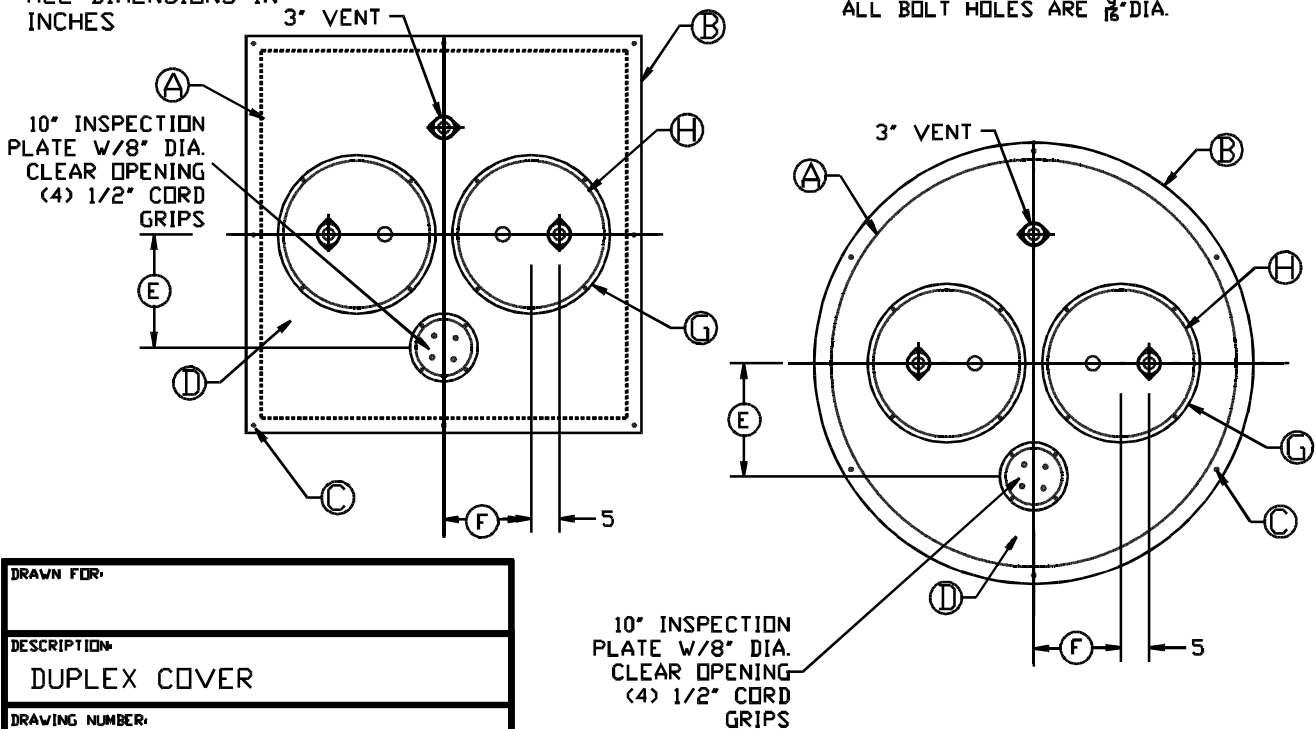


Submersible Pumps - Duplex Steel Covers

PART#	Ⓐ BASIN I.D.	Ⓑ COVER O.D.	Ⓒ BOLT CIRCLE	Ⓓ COVER THICKNESS	Ⓔ DISTANCE	Ⓕ DISTANCE	Ⓖ ACCESS. PLATE DIM	Ⓗ CLEAR ACCESS. DIM
LB-S2402 LB-S2402-01	24 24X24	28 28X28	26.5 26.5X26.5	1/4	N/A	6 1/2	15 3/4X13	11X13 3/4
LB-S3002 LB-S3002-01	30 30X30	34 34X34	32.5 32.5X32.5	1/4	10 1/2	8	18	16
LB-S3602 LB-S3602-01	36 36X36	40 40X40	38.5 38.5X38.5	1/4	13	10	18	16
LB-S4202 LB-S4202-01	42 42X42	46 46X46	44.5 44.5X44.5	1/4	14	11	22	20
LB-S4802 LB-S4802-01	48 48X48	54 54X54	51 51X51	1/4	18	13	22	20
LB-S5402 LB-S5402-01	54 54X54	60 60X60	57 57X57	1/4	18	13	22	20
LB-S6002 LB-S6002-01	60X60 60X60	66X66 66X66	63X63 63X63	3/8	20	15 1/2	28	26
LB-S6602 LB-S6602-01	66 66X66	72 72X72	69 69X69	3/8	18	15 1/2	22	20
LB-S7202 LB-S7202-01	72X72 72X72	78X78 78X78	75X75 75X75	3/8	20	15 1/2	28	26

ALL DIMENSIONS IN INCHES

ALL BOLT HOLES ARE 1/8" DIA.



DRAWN FOR:	
DESCRIPTION: DUPLIX COVER	
DRAWING NUMBER: 0007	
DATE: 9/8/00	SCALE: NONE

S.A. Armstrong Limited
 23 Bertrand Avenue
 Toronto, Ontario
 Canada, M1L 2P3
 Tel: (416) 755-2291
 Fax: (416) 759-9101
 Visit us at www.armstrongpumps.com

Armstrong Pumps Limited
 Peartree Road, Stanway
 Colchester, Essex
 United Kingdom, C03 5JX
 Tel: 01206-579491
 Fax: 01206-760532



© S. A. Armstrong Limited 2001

Armstrong Pumps Inc.
 93 East Avenue
 Buffalo, New York
 U.S.A. 14120-6594
 Tel: (716) 693-8813
 Fax: (716) 693-8970

Armstrong Darling Inc.
 2200 Place Transcanadienne
 Montreal, Quebec
 Canada, H9P 2X5
 Tel: (514) 421-2424
 Fax: (514) 421-2436

