

SUBMITTAL

Job: _____	Representative: _____
_____	_____
_____	_____
Engineer: _____	Order No: _____ Date: _____
Contractor: _____	Submitted by: _____ Date: _____
_____	Approved by: _____ Date: _____

PUMP DESIGN DATA	
MODEL:	<input type="checkbox"/> SIMPLEX <input type="checkbox"/> DUPLEX
MODEL NO.:	TAG:
CAPACITY USGPM	HEAD: FT
DISCHARGE SIZE:	<input type="checkbox"/> 1" NPT <input type="checkbox"/> 1-1/2" NPT
TEMPERATURE:	°F

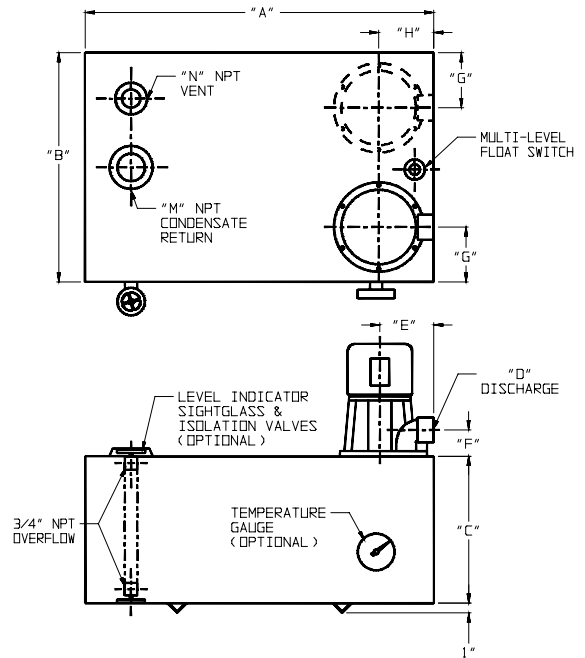
MATERIALS OF CONSTRUCTION	
IMPELLER	BRONZE
CASING	CAST IRON
TANK	CARBON STEEL
TANK GASKET	RUBBER
SHAFT	STAINLESS STEEL
PUMP BEARING	GRAPHALLOY
PUMP SEAL	GRAPHITE PACKING
LEVEL CONTROL DEVICE	MULTI LEVEL FLOAT CONTROL WITH S.S. HIGH LEVEL ALARM FLOAT

OPTIONAL TANK ACCESSORIES	
<input type="checkbox"/> TEMPERATURE GAUGE	
<input type="checkbox"/> LEVEL INDICATOR C/W ISOLATION VALVES	

	<ul style="list-style-type: none"> CONTROL PANEL FOR WALL MOUNTING, NEMA 1 ENCLOSURE 3 PHASE CONTROL PANEL WITH THERMOMAGNETIC MOTOR PROTECTOR, INTERNAL CIRCUIT BREAKER, MAGNETIC CONTACTOR, "HAND-OFF-AUTO" SELECTOR SWITCH, CONTROL TRANSFORMER C/W SECONDARY CIRCUIT BREAKER, HIGH TANK LEVEL BUZZER, SILENCE / TEST SWITCH AND PILOT LIGHT DUPLEX UNITS ALSO INCLUDE AUTOMATIC ALTERNATION AND AUTOMATIC TRANSFER TO NON OPERATING PUMP ON OVERLOAD
--	---

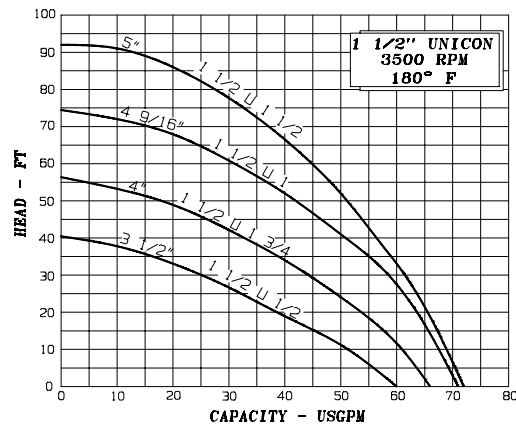
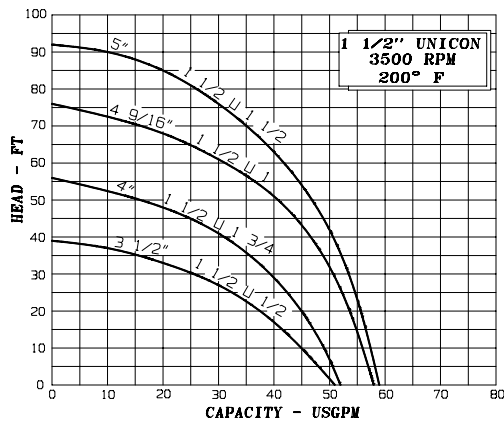
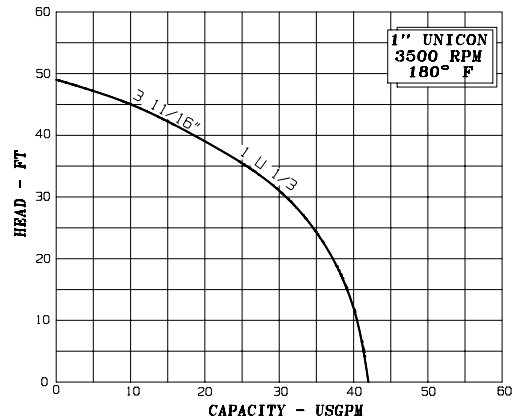
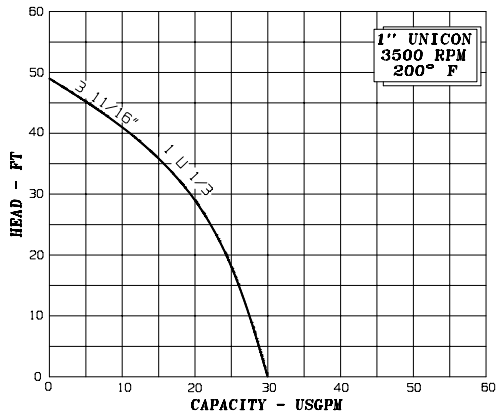
CONTROL PANEL OPTIONS	
<input type="checkbox"/> MOTOR OVERLOAD LIGHT	<input type="checkbox"/> MAIN DISCONNECT
<input type="checkbox"/> TIME TOTALIZER	<input type="checkbox"/> POWER ON LIGHT
<input type="checkbox"/> HIGH LEVEL ALARM CONTACT	<input type="checkbox"/> MOTOR RUN LIGHT

MOTOR DESIGN DATA			
HP:		RPM:	3600
FRAME SIZE:	56C	ENCLOSURE	ODP
VOLTS:	HERTZ: 60	PHASE:	

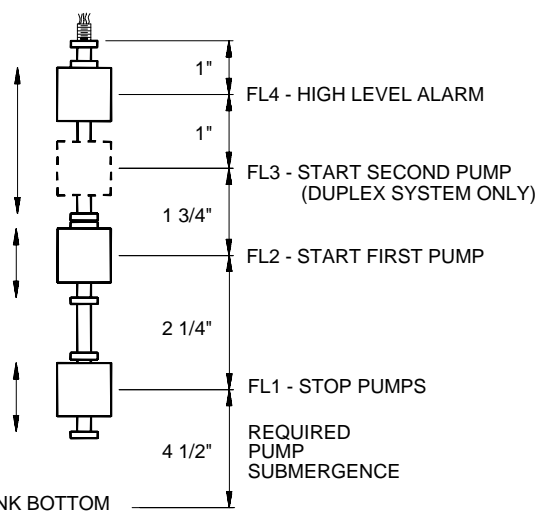


- NOTES**
- PUMP IN DOTTED LINES IS SHOWN FOR DUPLEX ARRANGEMENT
 - ALL UNITS, EXCEPT 9 USG UNITS, HAVE OPENINGS IN COVER FOR FUTURE SECOND PUMP

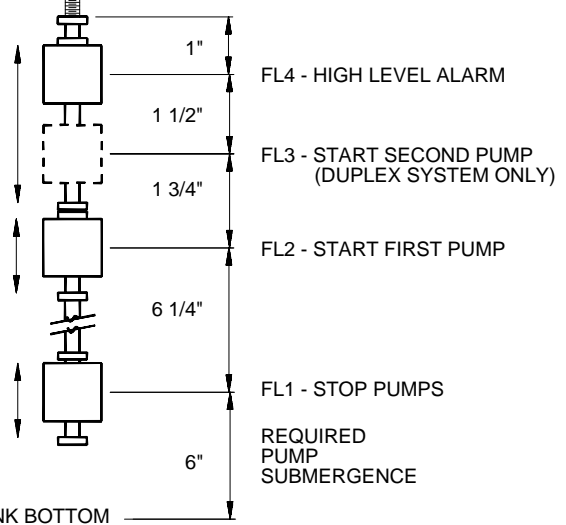
RECEIVER CAPACITY (GALLONS)	DIMENSIONS							CONNECTION		WEIGHT (lbs)		
	A	B	C	D	E	F	G	H	M	N	SIMPLEX	DUPLEX
9	19"	13"	10 1/2"	1"	4"	13 3/4"	4"	4"	1 1/4"	2"	91	--
40	36"	24"							1 1/2"		229	280
65	38"	25"	16"	1 1/2"	5 7/8"	2 7/8"	6"	6"	3"		390	491
100	48"	30"						14"		545	646	



MULTILEVEL SWITCH FOR 1" "UNICON"



MULTILEVEL SWITCH FOR 1 1/2" "UNICON"



S.A. Armstrong Limited
23 Bertrand Avenue
Toronto, Ontario
Canada, M1L 2P3
Tel: (416) 755-2291
Fax: (416) 759-9101

Armstrong Pumps Limited
Peartree Road, Stanway
Colchester, Essex
United Kingdom, C03 5JX
Tel: 01206-579491
Fax: 01206-760532



Armstrong Pumps Inc.
93 East Avenue
Buffalo, New York
U.S.A. 14120-6594
Tel: (716) 693-8813
Fax: (716) 693-8970

Armstrong Darling Inc.
2200 Place Transcanadienne
Montreal, Quebec
Canada, H9P 2X5
Tel: (514) 421-2424
Fax: (514) 421-2436