



FILE NO.:	6043.122
DATE:	Aug. 11, 2006
SUPERSEDES:	6043.122
DATE:	July 12, 2005

VERTICAL IN-LINE SPLIT COUPLER

PARTS LIST

SERIES 4300

EQUAL SUCTION & DISCHARGE

GROUPS 6 & 7

5/8" IMPELLER BORE -- 2 1/8" MECHANICAL SEAL OR PACKING GLAND

NEW DESIGN

MODEL 4300 - VERTICAL PUMP - SPLIT COUPLING

GROUPS 6 & 7 SELECTION CHART

PUMP SIZE	SERIES 4300 MOTOR FRAME/P-BASE DESIGNATION*							
	MOTOR FRAME GROUP NO.	284-286	324-326	364-365	404-405	444-445	447-449	499-500
10x10x13	7		16	16	16	16		
12x12x13	6	16	16					
	7			16	16	16		
8x8x15	6	16	16					
	7			16	16	16	16	
10x10x15	7			16	16	16	16	

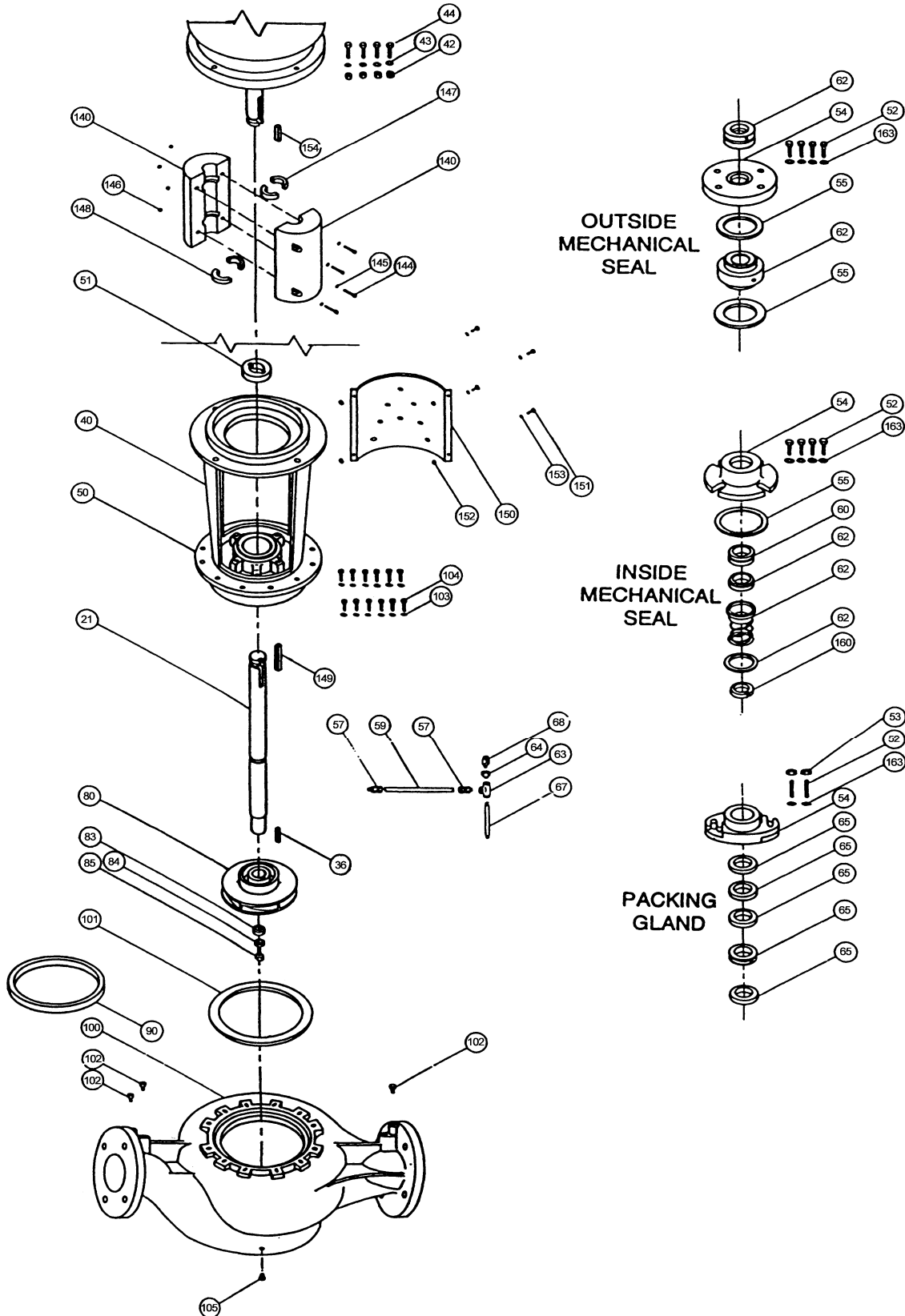
4300 GROUP NO.	6	7
SEAL SIZE AND PUMP SHAFT DIAMETER	2 1/8"	2 1/8"
IMPELLER BORE	1 5/8"	1 5/8"
COUPLING BORE:- MOTOR SHAFT DIA.	1 5/8"	2 1/8"
:- PUMP SHAFT DIA.	2 1/8"	2 1/8"

* P-Base designation refers to motor register nominal BD diameter (10 or 16)

MODEL 4300

EXPLODED VIEW

GROUPS 6 & 7, 1 5/8" IMPELLER BORE - 2 1/8" MECHANICAL SEAL OR PACKING GLAND



SEE PAGE 3 FOR PARTS INDEX

PARTS INDEX

ITEM	DESCRIPTION	PAGE	ITEM	DESCRIPTION	PAGE
21	SHAFT	9	64	BUSHING	13
36	IMPELLER KEY	9	65	PACKING	12
40	ADAPTER	7	66	LANTERN RING	12
42	MOTOR CAPSCREW NUT	8	67	NIPPLE	13
43	LOCKWASHER	8	68	AIR RELEASE VALVE	13
44	MOTOR CAPSCREW	8	80	IMPELLER	5
50	STUFFING BOX	7	83	IMPELLER WASHER	9
51	SEAL CHAMBER BUSH.	9	86	IMPELLER ACORN NUT	9
52	OUT. SEAL COV. CAPS.	11	90	CASE WEAR RING	6
52	IN. SEAL COV. CAPS.	12	100	CASING	4
52	PACKING GLAND STUD	12	101	CASING GASKET	6
53	PACK. GLAND STUD NUT	12	102	GAUGE PLUG	9
54	OUTSIDE SEAL COVER	11	103	WASHER	8
54	INSIDE SEAL COVER	12	104	CASING CAPSCREW	8
54	SPLIT GLAND	12	105	CASING DRAIN PLUG	4
55	INSIDE SEAL CVR. GSKT.	12	140	COUPLER	10
57	MALE CONNECTOR	13	144	COUPLER CAPSCREW	9
59	TUBING	13	145	LOCKWASHER	9
60	SEAL SEAT	12	146	NUT	9
62	OUTSIDE MECH. SEAL JOHN CRANE STD.	11	147	CPLR. RING KEY (MOTOR)	10
			148	CPLR. RING KEY (PUMP)	9
62	OUTSIDE MECH. SEAL JOHN CRANE T.C.	11	149	CPLR. SQUARE KEY (PUMP)	9
			150	COUPLING GUARD	8
62	OUTSIDE MECH. SEAL DURA STD.	11	151	CPLR. GUARD BOLT	9
			152	NUT	9
62	OUTSIDE MECH. SEAL DURA T.C.	11	153	WASHER	9
			160	RETAINING RING	12
62	INSIDE MECH. SEAL HD. B.F. & A.I. CONST.	12	163	PACK. GLAND WASHER	12
			163	OUTSIDE SEAL WASHER	12
63	TEE	13	163	INSIDE SEAL WASHER	12

NOTES: * Denotes Item 40 Adapter and Item 50 Stuffing Box are combined as a one piece casting.

** Denotes Item 40 Adapter and Item 50 Stuffing Box are separate castings.

VERTICAL IN-LINE - SPLIT COUPLER MODEL 4300 PUMP PARTS

EQUAL SUCTION AND DISCHARGE
GROUPS 6 & 7 - 1 5/8" IMPELLER BORE

2 1/8" MECHANICAL SEAL OR PACKING GLAND

ITEM 100 CASING**

PUMP SIZE	MATERIAL	PART NUMBER	BAR CODE
NOTE:- FOR 10X10X13 PUMPS SER. NO. 31492 AND LOWER			
10X10X13	125# C.I.	427340-011	
10X10X13	250# D.I.	427341-031	
NOTE:- FOR 10X10X13 PUMPS SER. NO. 31493 AND HIGHER			
10X10X13	125# C.I.	427330-011	
10X10X13	250# D.I.	427331-031	
NOTE:- FOR 12X12X13 PUMPS SER. NO. 31494 AND HIGHER			
PUMP SIZE	MATERIAL	PART NUMBER	BAR CODE
12X12X13	125# C.I.	427081-011	
12X12X13	250# D.I.	427082-031	
8X8X15	125# C.I.	427087-011	
8X8X15	250# D.I.	427088-031	
10X10X15	125# C.I.	427083-011	
10x10x15	250# D.I.	427084-031	

NOTES:

C.I.* DENOTES CAST IRON

D.I.* DENOTES DUCTILE IRON

** CASING PART NUMBERS ARE FOR CASING ONLY, CASING WEAR RING IS SOLD SEPARATELY.

IF NEW CASING IS REQUIRED, IT MUST BE ORDERED C/W WEAR RING.

ITEM 105 CASING DRAIN PLUG

PUMP SIZE	MATERIAL	NO. REQ'D	SIZE	PART NUMBER	BAR CODE
10X10X13 8X8X15 10X10X15	CAD. PLATED	1	1/2" NPT	937105-203	
12X12X13	CAD. PLATED	1	3/4" NPT	937105-204	

VERTICAL IN-LINE - SPLIT COUPLER MODEL 4300 PUMP PARTS

**EQUAL SUCTION AND DISCHARGE
GROUPS 6 & 7 - 1 5/8" IMPELLER BORE**

2 1/8" MECHANICAL SEAL OR PACKING GLAND

ITEM 80 IMPELLER**

PUMP SIZE	MATERIAL	IMP. BORE	MAX. DIA.	PART NUMBER	BAR CODE
NOTE:- FOR 10X10X13 PUMPS SER. NO. 31492 AND LOWER					
10X10X13	BRONZE	2 1/8"	13 3/16"	427204-041	
10X10X13	CAST IRON	2 1/8"	13 3/16"	427204-011	
NOTE:- FOR 10X10X13 PUMPS SER. NO. 31493 AND HIGHER					
10X10X13	BRONZE	2 1/8"	13 3/16"	427333-041	
10X10X13	CAST IRON	2 1/8"	13 3/16"	427333-011	
PUMP SIZE	MATERIAL	IMP. BORE	MAX. DIA.	PART NUMBER	BAR CODE
12X12X13	BRONZE	2 1/8"	13 3/16"	426995-041	
12X12X13	DUCTILE	2 1/8"	13 3/16"	426995-031	
8X8X15	BRONZE	2 1/8"	15 1/2"	427214-041	
8X8X15	CAST IRON	2 1/8"	15 1/2"	427214-011	
10X10X15	BRONZE	2 1/8"	15 1/2"	427218-041	
10x10x15	DUCTILE	2 1/8"	15 1/2"	427218-031	

** Impeller Part Numbers are for full or maximum diameter Impellers. Always specify Pump Serial Number and where possible, measure and advise the diameter of the Impeller being replaced on these Pumps.

**VERTICAL IN-LINE - SPLIT COUPLER
MODEL 4300
PUMP PARTS**

**EQUAL SUCTION AND DISCHARGE
GROUPS 6 & 7 - 1 5/8" IMPELLER BORE**

2 1/8" MECHANICAL SEAL OR PACKING GLAND

ITEM 90 CASE WEAR RING

PUMP SIZE	CONST.	MATERIAL	PART NUMBER	BAR CODE
10X10X13	AB-BF	SAE 660 BRONZE	426413-416	
10X10X13	AI-DI	CLASS 30 C.I.	426413-116	
12X12X13	AB-BF	SAE 660 BRONZE	425550-062	
12X12X13	AI-DI	CLASS 30 C.I.	425550-092	
8X8X15	AB-BF	SAE 660 BRONZE	426413-417	
8X8X15	AI-DI	CLASS 30 C.I.	426413-117	
10X10X15	AB-BF	SAE 660 BRONZE	426413-416	
10x10x15	AI-DI	CLASS 30 C.I.	426413-116	

ITEM 101 CASING GASKET

PUMP SIZE	CONSTRUCTION	PART NUMBER	BAR CODE
10X10X13	ALL	426401-005	
12X12X13	ALL	961131-455	
8X8X15	ALL	426401-008	
10X10X15			

VERTICAL IN-LINE - SPLIT COUPLER MODEL 4300 PUMP PARTS

EQUAL SUCTION AND DISCHARGE
GROUPS 6 & 7 - 1 5/8" IMPELLER BORE

2 1/8" MECHANICAL SEAL OR PACKING GLAND

ITEM 40 ADAPTER & ITEM 50 STUFFING BOX B.F. & A.I. CONSTRUCTION				
PUMP SIZE	MATERIAL	ITEM 40 ADAPTER		ITEM 50 STUFFING BOX
		FR 284 TO 405 - 16	FR 364 TO 445 - 16	
10X10X13	CAST IRON		426728-011 *	NOT REQUIRED
10X10X13	DUCTILE IRON		426728-031 *	
12X12X13	CAST IRON		425740-011 **	425737-011 **
12X12X13	DUCTILE IRON		425740-031 **	425737-031 **
8X8X15 10X10X15	CAST IRON	426723-011 *	426723-011 *	NOT REQUIRED
8X8X15 10X10X15	DUCTILE IRON	426723-031 *	426723-031 *	
BAR CODES				
DESCRIPTION	PART NUMBER	BAR CODE		
COMBINATION ADAPTER	426723-011 *			
COMBINATION ADAPTER	426723-031 *			
COMBINATION ADAPTER	426728-011 *			
COMBINATION ADAPTER	426728-031 *			
STUFFING BOX	425737-011 **			
STUFFING BOX	425737-031 **			
ADAPTER	425740-011 **			
ADAPTER	425740-031 **			

NOTES:

* Denotes Combination Item 40 (Adapter) and Item 50 (Stuffing Box).

** Denotes Item 40 (Adapter) and Item 50 (Stuffing Box) are separate Items.

**VERTICAL IN-LINE - SPLIT COUPLER
MODEL 4300
PUMP PARTS**

**EQUAL SUCTION AND DISCHARGE
GROUPS 6 & 7 - 1 5/8" IMPELLER BORE**

2 1/8" MECHANICAL SEAL OR PACKING GLAND

ITEM 150 COUPLING GUARD			
PUMP SIZE	NO. REQ'D	FRAMES 284 to 445-16	BAR CODE
10X10X13	2	427020-022	
12X12X13 8X8X15 10X10X15	2	427270-012	

ITEM 44 MOTOR CAPSCREW, ITEM 42 NUT & ITEM 43 LOCKWASHER					
PUMP SIZE	NO. REQ'D	DESCRIPTION	SIZE	PART NUMBER	BAR CODE
10X10X13	4	CAPSCREW	5/8-11NCX2"	911129-116	
	4	LOCKWASHER	5/8"	927215-100	
12X12X13 8X8X15	4	CAPSCREW	5/8-11NCX2"	911129-116	
	4	LOCKWASHER	5/8"	927215-100	
10X10X15	4	NUT	5/8"NC	913129-100	

ITEM 104 CASING CAPSCREW & ITEM 103 WASHER					
PUMP SIZE	NO. REQ'D	DESCRIPTION	SIZE	PART NUMBER	BAR CODE
10X10X13	16	CAPSCREW	5/8-11NCX1 3/4"	911129-114	
	16	LOCKWASHER	5/8"	927215-100	
12X12X13	18	CAPSCREW	1/2-13NCX2 1/4"	911125-118	
	18	WASHER	1/2"	927117-100	
8X8X15	16	CAPSCREW	5/8-11NCX2"	911129-116	
10X10X15	16	WASHER	5/8" FLAT	927121-100	

**VERTICAL IN-LINE - SPLIT COUPLER
MODEL 4300
PUMP PARTS**

**EQUAL SUCTION AND DISCHARGE
GROUPS 6 & 7 - 1 5/8" IMPELLER BORE**

2 1/8" MECHANICAL SEAL OR PACKING GLAND

COMMON PARTS, ALL CONSTRUCTIONS

ITEM NO.	DESCRIPTION	PART NUMBER	BAR CODE
21	2 1/8" PUMP SHAFT (12X12X13 ONLY)	425741-000	
21	2 1/8" PUMP SHAFT	426687-000	
36	IMPELLER KEY (12X12X13 ONLY)	428164-720	
36	IMPELLER KEY	428163-714	
51	SEAL CHAMBER BUSHING	425520-003	
83	IMPELLER WASHER	425742-006	
86	IMPELLER ACORN NUT	425745-001	
102	GAUGE PLUG (4 REQ'D) 1/4"NPT. CAD PLATED	937105-201	
144	COUPLER CAPSCREW (4 REQ'D) 5/16"-18NCX2" SAE GRADE 5	911121-224	
145	LOCKWASHER (FOR ITEM 144) 4 REQ'D - 5/16"	927211-100	
146	NUT (FOR ITEM 144) 4 REQ'D - 5/16"NC	913121-200	
148	CPLR. RING KEY (PUMP SHAFT)	425651-000	
149	COUPLER KEY (PUMP SHAFT)	428164-720	
151	COUPLER GUARD BOLT 2 REQ'D - RD. HD. #8-32X3/4"	916262-116	
152	NUT (FOR ITEM 151) 2 REQ'D - #8/32	913162-100	
153	WASHER (FOR ITEM 151) 2 REQ'D - #8/32	927105-100	

VERTICAL IN-LINE - SPLIT COUPLER MODEL 4300 PUMP PARTS

EQUAL SUCTION AND DISCHARGE
GROUPS 6 & 7 - 1 5/8" IMPELLER BORE
2 1/8" MECHANICAL SEAL OR PACKING GLAND

ITEM 140 COUPLER			
FRAME SIZE	284-286-16BD	364-365-16BD	BAR CODE
PUMP SIZE	324-326-16BD	444-445-16BD	
12X12X13 8X8X15	425659-000		
10X10X13 12X12X13 8X8X15 10X10X15		425650-000	

ITEM 147 COUPLER RING KEY (Motor Shaft)			
FRAME SIZE	284-286-16BD	364-365-16BD	BAR CODE
PUMP SIZE	324-326-16BD	444-445-16BD	
12X12X13 8X8X15	425518-000		
10X10X13 12X12X13 8X8X15 10X10X15		425651-000	

**VERTICAL IN-LINE - SPLIT COUPLER
MODEL 4300
PUMP PARTS**

**EQUAL SUCTION AND DISCHARGE
GROUPS 6 & 7 - 1 5/8" IMPELLER BORE**

2 1/8" MECHANICAL SEAL OR PACKING GLAND

PARTS FOR 2 1/8" OUTSIDE SEAL

ITEM NO.	DESCRIPTION	CONSTRUCTION	PART NUMBER	BAR CODE
62	MECHANICAL SEAL			
	ARMSTRONG SEAL Standard 2.125 Ab2 C-SC316-V	ALL	975002-374	
	DURAMETALLIC STD.	ALL	975002-073	
	DURAMETALLIC T.C.	ALL	975002-071	
	JOHN CRANE STD.	ALL	975000-957	
	JOHN CRANE T.C.	ALL	975000-967	
52	CAPSCREW - 4REQ'D 1/2"-13NCX2" S/S	ALL	911125-416	
163	WASHER - 4 REQ'D 1/2" FLAT 316 S/S	ALL	927118-100	
54	SEAL COVER	BF - DBF	426486-002	
		AI - DI	426486-001	

NOTES:

BF - DBF ---- DENOTES BRONZE FITTED - DUCTILE BRONZE FITTED

AI - DI ----- DENOTES ALL IRON - DUCTILE IRON

VERTICAL IN-LINE - SPLIT COUPLER MODEL 4300 PUMP PARTS

EQUAL SUCTION AND DISCHARGE

GROUPS 6 & 7 - 1 5/8" IMPELLER BORE

2 1/8" MECHANICAL SEAL OR PACKING GLAND

PARTS FOR 2 1/8" INSIDE MECH. SEAL ARRANGEMENT

ITEM NO.	DESCRIPTION	CONSTRUCTION	PART NUMBER	BAR CODE
62	MECHANICAL SEAL	ALL	975001-577	
60	SEAL SEAT	ALL	975000-931	
52	CAPSCREW - 4 REQ'D 1/2"-13NCX2" S/S	ALL	911125-416	
163	WASHER - 4 REQ'D 1/2" FLAT	ALL	427117-100	
54	SEAL COVER	BF - DBF	426466-011	
55	SEAL COVER GASKET	ALL	426467-003	
160	RETAINING RING	ALL	923104-451	

PARTS FOR 2 1/8" PACKED GLAND ARRANGEMENT

ITEM NO.	DESCRIPTION	CONSTRUCTION	PART NUMBER	BAR CODE
52	STUDBOLT - 2 REQ'D 1/2"-13NCX3" S/S	ALL	915225-424	
53	NUT - 2 REQ'D 1/2"-13NC S/S	ALL	913125-400	
163	WASHER - 2 REQ'D 1/2" FLAT	ALL	927117-100	
54	SPLIT GLAND	ALL	426463-011	
65	PACKING - 5 REQ'D 2 1/8"X3/8" JC #1340	ALL	966302-001	
66	LANTERN RING	ALL	426451-005	

NOTES:

BF - DBF ---- DENOTES BRONZE FITTED - DUCTILE BRONZE FITTED

AI - DI ----- DENOTES ALL IRON - DUCTILE IRON

VERTICAL IN-LINE - SPLIT COUPLER MODEL 4300 PUMP PARTS

EQUAL SUCTION AND DISCHARGE
GROUPS 6 & 7 - 1 5/8" IMPELLER BORE

2 1/8" MECHANICAL SEAL OR PACKING GLAND

COMMON PARTS FOR OUTSIDE AND INSIDE SEAL ARRANGEMENTS				
ITEM NO.	DESCRIPTION	CONSTRUCTION	PART NUMBER	BAR CODE
57	MALE CONNECTOR	BF - DBF	939001-114	
	3/8" TUBE X 1/4"NPT	AI - DI	939001-214	
59	TUBING 24" REQUIRED	BF - DBF	997531-004	
	3/8"OD X .035 WALL	AI - DI	997153-004	
63	TEE	BF - DBF	935101-001	
	1/4" NPT	AI - DI	931101-101	
64	BUSHING	BF - DBF	935123-050	
	1/4" X 1/8" NPT	AI - DI	931123-150	
67	NIPPLE	BF - DBF	938103-001	
	1/4" X 2 1/2"	AI - DI	938003-101	
68	AIR RELEASE VALVE	BF - DBF	939018-101	
		AI - DI	218644-000	

NOTES:

BF - DBF ---- DENOTES BRONZE FITTED - DUCTILE BRONZE FITTED

AI - DI ----- DENOTES ALL IRON - DUCTILE IRON