



FILE NO.:	6043.121
DATE:	December 21, 2011
SUPERSEDES:	6043.121
DATE:	Feb. 27, 2004

VERTICAL IN-LINE SPLIT COUPLER

PARTS LIST

SERIES 4300

EQUAL SUCTION & DISCHARGE

GROUPS 3, 4 & 5

1 1/4" IMPELLER BORE -- 1 5/8" MECHANICAL SEAL OR PACKING GLAND

NEW DESIGN

MODEL 4300 - VERTICAL PUMP - SPLIT COUPLING

GROUPS 3,4 & 5 SELECTION CHART

PUMP SIZE	SERIES 4300 MOTOR FRAME/P-BASE DESIGNATION*						
	MOTOR FRAME	213-215-10	254-256-10	284-286-16	324-326-16	364-365-16	404-405-16
	GROUP NO.						
2X2X8	4			16			
3X3X8	4			16	16		
4X4X8	4			16	16		
	5					16	
5X5X8	4			16	16		
	5					16	
3X3X10	4			16	16		
	5					16	
4X4X10	4			16	16		
	5					16	
6X6X10	4			16	16		
	5					16	16
8X8X10	4			16	16		
4X4X11-1/2	4			16	16		
5X5X11-1/2	4			16	16		
6X6X11-1/2	4			16	16		
8X8X11-1/2	4			16	16		
	5				16	16	
3x3x13	3	10	10				
	4			16			
	5				16	16	
4x4x13	4			16			
6x6x13	3		10				
	4			16			
	5				16		
8x8x13	3		10				
	4			16			
	5				16		
10X10X13	4			16			

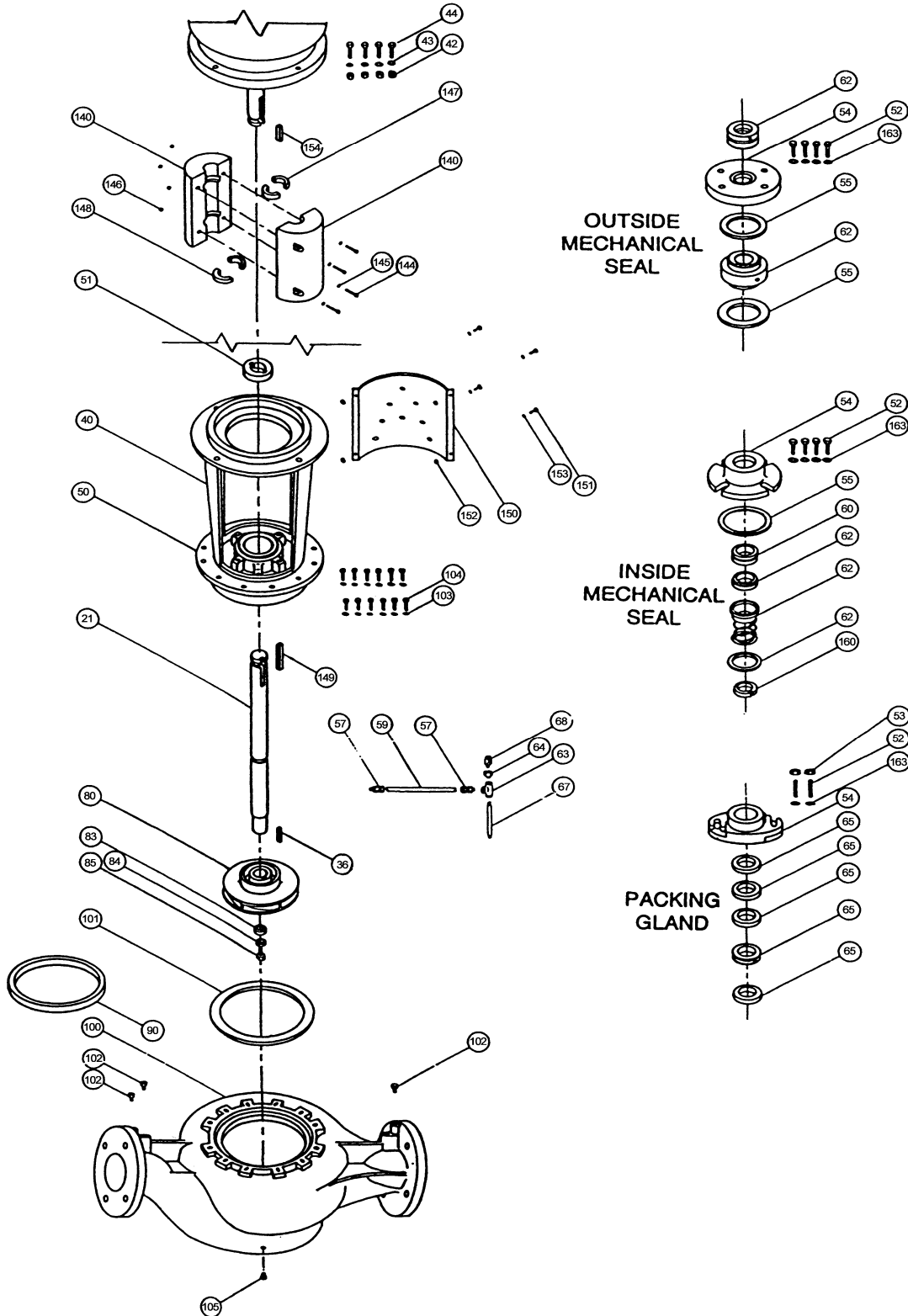
4300 GROUP NO.	3	4	5
SEAL SIZE AND PUMP SHAFT DIAMETER	1 5/8"	1 5/8"	1 5/8"
IMPELLER BORE	1 1/4"	1 1/4"	1 1/4"
COUPLING BORE:- MOTOR SHAFT DIA.	1 1/8"	1 5/8"	2-1/8
:- PUMP SHAFT DIA.	1 5/8"	1 5/8"	1-5/8

* P-Base designation refers to motor register nominal BD diameter (10 or 16)

MODEL 4300

EXPLODED VIEW

GROUPS 3,4 & 5, 1 1/4" IMPELLER BORE - 1 5/8" MECHANICAL SEAL OR PACKING GLAND



SEE PAGE 3 FOR PARTS INDEX

PARTS INDEX

ITEM	DESCRIPTION	PAGE	ITEM	DESCRIPTION	PAGE
21	SHAFT	17	63	TEE	22
36	IMPELLER KEY	17	64	BUSHING	22
40*	ADAPTER C.I.	13	65	PACKING	21
40*	ADAPTER D.I.	14	66	LANTERN RING	21
42	MOTOR CAPSCREW NUT	15	67	NIPPLE	22
43	LOCKWASHER	15	68	AIR RELEASE VALVE	22
44	MOTOR CAPSCREW	15	80	IMPELLER	6 & 7
50*	STUFFING BOX C.I.	13	83	IMPELLER WASHER	17
50*	STUFFING BOX D.I.	14	86	IMPELLER ACORN NUT	17
51	SEAL CHAMBER BUSH.	17	90	CASE WEAR RING	8 & 9
52	OUT. SEAL COV. CAPS.	20	100	CASING	4 & 5
52	IN. SEAL COV. CAPS.	21	101	CASING GASKET	10
52	PACKING GLAND STUD	21	102	GAUGE PLUG	17
53	PACK. GLAND STUD NUT	21	103	WASHER	11
54	OUTSIDE SEAL COVER	20	104	CASING CAPSCREW	11
54	INSIDE SEAL COVER	21	105	CASING DRAIN PLUG	12
54	SPLIT GLAND	21	140	COUPLER	18
55	INSIDE SEAL COV. GSKT.	21	144	COUPLER CAPSCREW	17
57	MALE CONNECTOR	22	145	LOCKWASHER	17
59	TUBING	22	146	NUT	17
60	SEAL SEAT	21	147	CPLR. RING KEY (MOTOR)	19
62	OUTSIDE MECH. SEAL JOHN CRANE STD.	20	148	CPLR. RING KEY (PUMP)	17
			149	CPLR. SQUARE KEY (PUMP)	17
62	OUTSIDE MECH. SEAL JOHN CRANE T.C.	20	150	COUPLING GUARD	16
			151	CPLR. GUARD BOLT	17
62	OUTSIDE MECH. SEAL DURA STD.	20	152	NUT	17
			153	WASHER	17
62	OUTSIDE MECH. SEAL DURA T.C.	20	163	OUTSIDE SEAL WASHER	20
			163	INSIDE SEAL WASHER	21
62	INSIDE MECH. SEAL HD. B.F. & A.I. CONST.	21	163	PACKED GLAND WASHER	21

NOTES: * In most cases Item 40 Adapter and Item 50 Stuffing Box are combined as a one piece casting, however, some of the larger Pumps have separate Adapters and Stuffing Boxes.

**VERTICAL IN-LINE - SPLIT COUPLER
MODEL 4300
PUMP PARTS**

**EQUAL SUCTION AND DISCHARGE
GROUPS 3, 4 & 5 - 1 1/4" IMPELLER BORE**

1 5/8" MECHANICAL SEAL OR PACKING GLAND

ITEM 100 CASING**			
PUMP SIZE	MATERIAL	PART NUMBER	BAR CODE
2X2X8	125# C.I.	427047-011	
2X2X8	250# D.I.	427048-031	
3X3X8	125# C.I.	427051-011	
3X3X8	250# D.I.	427052-031	
4X4X8	125# C.I.	427053-011	
4X4X8	250# D.I.	427054-031	
5X5X8	125# C.I.	427024-011	
5X5X8	250# D.I.	427025-031	
1.5X1.5X10	125# C.I.*	426257-011	
1.5X1.5X10	250# D.I.*	426258-031	
2X2X10	125# C.I.*	427059-011	
2X2X10	250# D.I.*	427060-031	
3X3X10	125# C.I.	427061-011	
3X3X10	250# D.I.	427062-031	
4X4X10	125# C.I.	427063-011	
4X4X10	250# D.I.	427064-031	
6X6X10	125# C.I.	427065-011	
6X6X10	250# D.I.	427066-031	
8X8X10	125# C.I.	427067-011	
8X8X10	250# D.I.	427068-031	

NOTES:

C.I.* DENOTES CAST IRON

D.I.* DENOTES DUCTILE IRON

** CASING PART NUMBERS ARE FOR CASING ONLY, CASING WEAR RING IS SOLD SEPARATELY.

IF NEW CASING IS REQUIRED, IT MUST BE ORDERED C/W WEAR RING.

CASINGS CONTINUED ON PAGE 5

VERTICAL IN-LINE - SPLIT COUPLER MODEL 4300 PUMP PARTS

EQUAL SUCTION AND DISCHARGE
GROUPS 3, 4, & 5 1 1/4" IMPELLER BORE

1 5/8" MECHANICAL SEAL OR PACKING GLAND

ITEM 100 CASING** (cont'd)

PUMP SIZE	MATERIAL	PART NUMBER	BAR CODE
4X4X11 1/2	125# C.I.	426119-011	
4X4X11 1/2	250# D.I.	426120-031	
5X5X11 1/2	125# C.I.	426123-011	
5X5X11 1/2	250# D.I.	426124-031	
6X6X11 1/2	125# C.I.	426127-011	
6X6X11 1/2	250# D.I.	426128-031	
8X8X11 1/2	125# C.I.	426131-011	
8X8X11 1/2	250# D.I.	426132-031	
3x3x13	125# C.I.	427071-011	
3x3x13	250# D.I.	427072-031	
4x4x13	125# C.I.	427073-011	
4x4x13	250# D.I.	427074-031	
6x6x13	125# C.I.	427075-011	
6x6x13	250# D.I.	427076-031	
8x8x13	125# C.I.	427077-011	
8x8x13	250# D.I.	427078-031	
NOTE:- FOR 10X10X13 PUMPS SER. NO. 31492 AND LOWER			
10x10x13	125# C.I.	427340-011	
10x10x13	250# D.I.	427341-031	
NOTE:- FOR 10X10X13 PUMPS SER. NO. 31493 AND HIGHER			
10x10x13	125# C.I.	427330-011	
10x10x13	250# D.I.	427331-031	

NOTES:

C.I.* DENOTES CAST IRON

D.I.* DENOTES DUCTILE IRON

** CASING PART NUMBERS ARE FOR CASING ONLY, CASING WEAR RING IS SOLD SEPARATELY. IF NEW CASING IS REQUIRED, IT MUST BE ORDERED C/W WEAR RING

VERTICAL IN-LINE - SPLIT COUPLER MODEL 4300 PUMP PARTS

EQUAL SUCTION AND DISCHARGE

GROUPS 3, 4 & 5 1 1/4" IMPELLER BORE

1 5/8" MECHANICAL SEAL OR PACKING GLAND

ITEM 80 IMPELLER** 1 1/4" BORE

PUMP SIZE	MATERIAL	IMP. BORE	MAX. DIA.	PART NUMBER	BAR CODE
2X2X8	BRONZE	1 1/4"	8 3/16"	427122-041	
2X2X8	CAST IRON	1 1/4"	8 3/16"	427122-011	
3X3X8	BRONZE	1 1/4"	8 3/16"	427130-041	
3X3X8	CAST IRON	1 1/4"	8 3/16"	427130-011	
4X4X8	BRONZE	1 1/4"	8 3/16"	427138-041	
4X4X8	CAST IRON	1 1/4"	8 3/16"	427138-011	
5X5X8	BRONZE	1 1/4"	8 3/16"	427132-041	
5X5X8	CAST IRON	1 1/4"	8 3/16"	427132-011	
1.5X1.5X10	BRONZE	1 1/4"	10 3/16"	426256-041	
1.5X1.5X10	CAST IRON	1 1/4"	10 3/16"	426256-011	
2X2X10	BRONZE	1 1/4"	10 3/16"	427152-041	
2X2X10	CAST IRON	1 1/4"	10 3/16"	427152-011	
3X3X10	BRONZE	1 1/4"	10 3/16"	427164-041	
3X3X10	CAST IRON	1 1/4"	10 3/16"	427164-011	
4X4X10	BRONZE	1 1/4"	10 3/16"	427150-041	
4X4X10	CAST IRON	1 1/4"	10 3/16"	427150-011	
6X6X10	BRONZE	1 1/4"	10 3/16"	427154-041	
6X6X10	CAST IRON	1 1/4"	10 3/16"	427154-011	
8X8X10	BRONZE	1 1/4"	10 3/16"	427157-041	
8X8X10	CAST IRON	1 1/4"	10 3/16"	427157-011	

** Impeller Part Numbers are for full or maximum diameter Impellers. Always specify Pump Serial Number and where possible, measure and advise the diameter of the Impeller being replaced on these Pumps.

IMPELLERS CONTINUED ON PAGE 7

**VERTICAL IN-LINE - SPLIT COUPLER
MODEL 4300
PUMP PARTS**

**EQUAL SUCTION AND DISCHARGE
GROUPS 3, 4 & 5 1 1/4" IMPELLER BORE**

1 5/8" MECHANICAL SEAL OR PACKING GLAND

ITEM 80 IMPELLER 1 1/4" BORE (cont'd)**

PUMP SIZE	MATERIAL	IMP. BORE	MAX. DIA.	PART NUMBER	BAR CODE
4X4X11 1/2	BRONZE	1 1/4"	11 1/2"	426282-041	
4X4X11 1/2	CAST IRON	1 1/4"	11 1/2"	426282-011	
5X5X11 1/2	BRONZE	1 1/4"	11 1/2"	426284-041	
5X5X11 1/2	CAST IRON	1 1/4"	11 1/2"	426284-011	
6X6X11 1/2	BRONZE	1 1/4"	11 1/2"	426288-041	
6X6X11 1/2	CAST IRON	1 1/4"	11 1/2"	426288-011	
8X8X11 1/2	BRONZE	1 1/4"	11 1/2"	426289-041	
8X8X11 1/2	CAST IRON	1 1/4"	11 1/2"	426289-011	
3x3x13	BRONZE	1 1/4"	13 3/16"	427165-041	
3x3x13	CAST IRON	1 1/4"	13 3/16"	427165-011	
4x4x13	BRONZE	1 1/4"	13 3/16"	427175-041	
4x4x13	CAST IRON	1 1/4"	13 3/16"	427175-011	
6x6x13	BRONZE	1 1/4"	13 3/16"	427173-041	
6x6x13	CAST IRON	1 1/4"	13 3/16"	427173-011	
8x8x13	BRONZE	1 1/4"	13 3/16"	427177-041	
8x8x13	CAST IRON	1 1/4"	13 3/16"	427177-011	
NOTE:- FOR 10X10X13 PUMPS SER. NO. 31492 AND LOWER					
10x10x13	BRONZE	1 1/4"	13 3/16"	427203-041	
10x10x13	CAST IRON	1 1/4"	13 3/16"	427203-011	
NOTE:- FOR 10X10X13 PUMPS SER. NO. 31492 AND HIGHER					
10x10x13	BRONZE	1 1/4"	13 3/16"	427332-041	
10x10x13	CAST IRON	1 1/4"	13 3/16"	427332-011	

** Impeller Part Numbers are for full or maximum diameter Impellers. Always specify Pump Serial Number and where possible, measure and advise the diameter of the Impeller being replaced on these Pumps.

VERTICAL IN-LINE - SPLIT COUPLER MODEL 4300 PUMP PARTS

EQUAL SUCTION AND DISCHARGE

GROUPS 3, 4 & 5 1 1/4" IMPELLER BORE

1 5/8" MECHANICAL SEAL OR PACKING GLAND

ITEM 90 CASE WEAR RING

PUMP SIZE	CONST.	MATERIAL	PART NUMBER	BAR CODE
2X2X8	AB-BF	SAE 660 BRONZE	426413-404	
2X2X8	AI-DI	CLASS 30 C.I.	426413-104	
3X3X8	AB-BF	SAE 660 BRONZE	426413-407	
3X3X8	AI-DI	CLASS 30 C.I.	426413-107	
4X4X8	AB-BF	SAE 660 BRONZE	426413-410	
4X4X8	AI-DI	CLASS 30 C.I.	426413-110	
5X5X8	AB-BF	SAE 660 BRONZE	426413-413	
5X5X8	AI-DI	CLASS 30 C.I.	426413-113	
1.5x1.5x10	AB-DF	SAE 660 BRONZE	426416-402	
1.5x1.5x10	AI-DI	CLASS 30 C.I.	426416-102	
2x2x10	AB-BF	SAE 660 BRONZE	426413-404	
2x2x10	AI-DI	CLASS 30 C.I.	426413-104	
3x3x10	AB-BF	SAE 660 BRONZE	426413-404	
3x3x10	AI-DI	CLASS 30 C.I.	426413-104	
4x4x10	AB-BF	SAE 660 BRONZE	426413-408	
4x4x10	AI-DI	CLASS 30 C.I.	426413-108	
6x6x10	AB-BF	SAE 660 BRONZE	426413-412	
6x6x10	AI-DI	CLASS 30 C.I.	426413-112	
8x8x10	AB-BF	SAE 660 BRONZE	426413-414	
8x8x10	AI-DI	CLASS 30 C.I.	426413-114	

WEAR RINGS CONTINUED ON PAGE 9

**VERTICAL IN-LINE - SPLIT COUPLER
MODEL 4300
PUMP PARTS**

EQUAL SUCTION AND DISCHARGE

GROUPS 3, 4 & 5 1 1/4" IMPELLER BORE

1 5/8" MECHANICAL SEAL OR PACKING GLAND

ITEM 90 CASE WEAR RING (cont'd)

PUMP SIZE	CONST.	MATERIAL	PART NUMBER	BAR CODE
4x4x11 1/2	AB-BF	SAE 660 BRONZE	426412-405	
4x4x11 1/2	AI-DI	CLASS 30 C.I.	426412-105	
5x5x11 1/2	AB-BF	SAE 660 BRONZE	426412-411	
5x5x11 1/2	AI-DI	CLASS 30 C.I.	426412-111	
6x6x11 1/2	AB-BF	SAE 660 BRONZE	426412-420	
6x6x11 1/2	AI-DI	CLASS 30 C.I.	426412-120	
8x8x11 1/2	AB-BF	SAE 660 BRONZE	426412-421	
8x8x11 1/2	AI-DI	CLASS 30 C.I.	426412-121	
3X3X13	AB-BF	SAE 660 BRONZE	426413-409	
3X3X13	AI-DI	CLASS 30 C.I.	426413-109	
4X4X13	AB-BF	SAE 660 BRONZE	426413-412	
4X4X13	AI-DI	CLASS 30 C.I.	426413-112	
6X6X13	AB-BF	SAE 660 BRONZE	426413-414	
6X6X13	AI-DI	CLASS 30 C.I.	426413-114	
8X8X13	AB-BF	SAE 660 BRONZE	426413-415	
8X8X13	AI-DI	CLASS 30 C.I.	426413-115	
10x10x13	AB-BF	SAE 660 BRONZE	426413-417	
10x10x13	AI-DI	CLASS 30 C.I.	426413-117	

VERTICAL IN-LINE - SPLIT COUPLER MODEL 4300 PUMP PARTS

EQUAL SUCTION AND DISCHARGE

GROUPS 3, 4 & 5 1 1/4" IMPELLER BORE

1 5/8" MECHANICAL SEAL OR PACKING GLAND

ITEM 103 CASING GASKET			
PUMP SIZE	CONSTRUCTION	PART NUMBER	BAR CODE
2X2X8	ALL	426401-003	
3X3X8			
4X4X8			
5X5X8			
1.5X1.5X10	ALL	426401-004	
2X2X10			
3X3X10			
4X4X10			
6X6X10			
8X8X10			
4X4X11 1/2	ALL	426401-006	
5X5X11 1/2			
6X6X11 1/2			
8X8X11 1/2			
3X3X13	ALL	426401-005	
4X4X13			
6X6X13			
8X8X13			
10X10X13			

**VERTICAL IN-LINE - SPLIT COUPLER
MODEL 4300
PUMP PARTS**

EQUAL SUCTION AND DISCHARGE

GROUPS 3, 4 & 5 1 1/4" IMPELLER BORE

1 5/8" MECHANICAL SEAL OR PACKING GLAND

ITEM 104 CASING CAPSCREW & ITEM 103 WASHER								
PUMP SIZE	NO. REQ'D	FRAMES 182 TO 256-10 CAPSCREW	NO. REQ'D	FRAMES 182 TO 256-10 WASHER	NO. REQ'D	FRAMES 284 TO 405-16 CAPSCREW	NO. REQ'D	FRAMES 284 TO 405-16 WASHER
2X2X8 3X3X8 4X4X8 5X5X8					8	5/8"-11NC 1 1/2" LG. 911129-112	8	5/8" FLAT 927121-100
1.5X1.5X10 2X2X10 3X3X10 6X6X10 8X8X10					12	5/8"-11NC 1 1/2" LG. 911129-112	12	5/8" FLAT 927121-100
4X4X10					12	5/8"-11NC 1 3/4" LG. 911129-114	12	5/8" LOCKWASHER 927215-100
4X4X11 1/2 5X5X11 1/2 6X6X11 1/2 8X8X11 1/2					16	1/2"-13NC 1 1/2" LG. 911125-112	16	1/2" FLAT 927114-100
3X3X13 4X4X13 6X6X13 8X8X13	16	5/8"-11NC 1 3/4" LG. 911129-114	16	5/8" FLAT 927121-100	16	5/8"-11NC 2" LG. 911129-116	16	5/8" FLAT 927121-100
10X10X13								

BAR CODES

PART NUMBER	BAR CODE	PART NUMBER	BAR CODE
911125-112		927114-100	
911129-112		927121-100	
911129-114		927215-100	
911129-116			

VERTICAL IN-LINE - SPLIT COUPLER MODEL 4300 PUMP PARTS

EQUAL SUCTION AND DISCHARGE

GROUPS 3, 4 & 5 1 1/4" IMPELLER BORE

1 5/8" MECHANICAL SEAL OR PACKING GLAND

ITEM 105 CASING DRAIN PLUG

PUMP SIZE	MATERIAL	NO. REQ'D	SIZE	PART NUMBER	BAR CODE
2X2X8	CAD PLATED	1	1/4" NPT	937105-201	
3X3X8					
4X4X8					
5X5X8					
1.5X1.5X10					
2X2X10					
3X3X10					
4X4X10					
8X8X10					
4X4X11 1/2					
5X5X11 1/2					
3X3X13					
4X4X13					
5X5X8	CAD PLATED	1	1/2"NPT	937105-203	
6X6X10					
6X6X11 1/2					
8X8X11 1/2					
6X6X13					
8X8X13					
10X10X13					

VERTICAL IN-LINE - SPLIT COUPLER MODEL 4300 PUMP PARTS

EQUAL SUCTION AND DISCHARGE

GROUPS 3, 4 & 5 1 1/4" IMPELLER BORE

1 5/8" MECHANICAL SEAL OR PACKING GLAND

ITEM 40 ADAPTER & ITEM 50 STUFFING BOX B.F. & A.I. CONSTRUCTION				
PUMP SIZE	MATERIAL	ITEM 40 ADAPTER		ITEM 50 STUFFING BOX
		FR182 TO 256 - 10	FR 284 TO 405 - 16	
2X2X8 3X3X8	CAST IRON		combination 40 and 50 426716-011	N O T R E Q U I R E D
4X4X8 5X5X8	CAST IRON		combination 40 and 50 426716-015	
1.5X1.5X10 2X2X10 3X3X10	CAST IRON		combination 40 and 50 426718-011	
4X4X10	CAST IRON		combination 40 and 50 426718-015	
6X6X10 8X8X10	CAST IRON		combination 40 and 50 426718-011	
4X4X11 1/2 5X5X11 1/2 6X6X11 1/2 8X8X11 1/2	CAST IRON		combination 40 and 50 426730-011	
3X3X13 4X4X13 6X6X13 8X8X13 10X10X13	CAST IRON	use with Item 50 426719-011	use with Item 50 426720-011	
BAR CODES				
DESCRIPTION	PART NUMBER	BAR CODE		
COMBINATION ADAPTER	426716-011			
COMBINATION ADAPTER	426716-015			
COMBINATION ADAPTER	426718-011			
COMBINATION ADAPTER	426718-015			
COMBINATION ADAPTER	426730-011			
ADAPTER	426719-011			
ADAPTER	426720-011			
STUFFING BOX	426712-011			

DUCTILE IRON ADAPTER/STUFFING BOX ON PAGE 14

VERTICAL IN-LINE - SPLIT COUPLER MODEL 4300 PUMP PARTS

EQUAL SUCTION AND DISCHARGE

GROUPS 3, 4 & 5 1 1/4" IMPELLER BORE

1 5/8" MECHANICAL SEAL OR PACKING GLAND

ITEM 40 ADAPTER & ITEM 50 STUFFING BOX DI & DBF CONSTRUCTION				
PUMP SIZE	MATERIAL	ITEM 40 ADAPTER		ITEM 50 STUFFING BOX
		FR182 TO 256 - 10	FR 284 TO 405 - 16	
2X2X8 3X3X8	DUCTILE IRON		combination 40 and 50 426716-031	N O T R E Q U I R E D
4X4X8 5X5X8	DUCTILE IRON		combination 40 and 50 426716-035	
1.5X1.5X10 2X2X10 3X3X10	DUCTILE IRON		combination 40 and 50 426718-031	
4X4X10	DUCTILE IRON		combination 40 and 50 426718-035	
6X6X10 8X8X10	DUCTILE IRON		combination 40 and 50 426718-031	
4X4X11 1/2 5X5X11 1/2 6X6X11 1/2 8X8X11 1/2	DUCTILE IRON		combination 40 and 50 426730-031	
3X3X13 4X4X13 6X6X13 8X8X13 10X10X13	DUCTILE IRON	use with Item 50 426719-031	use with Item 50 426720-031	
BAR CODES				
DESCRIPTION	PART NUMBER	BAR CODE		
COMBINATION ADAPTER	426716-031			
COMBINATION ADAPTER	426716-035			
COMBINATION ADAPTER	426718-031			
COMBINATION ADAPTER	426718-035			
COMBINATION ADAPTER	426730-031			
ADAPTER	426719-031			
ADAPTER	426720-031			
STUFFING BOX	426712-031			

VERTICAL IN-LINE - SPLIT COUPLER MODEL 4300 PUMP PARTS

EQUAL SUCTION AND DISCHARGE

GROUPS 3, 4 & 5 1 1/4" IMPELLER BORE

1 5/8" MECHANICAL SEAL OR PACKING GLAND

ITEM 44 MOTOR CAPSCREW, ITEM 42 NUT & ITEM 43 LOCKWASHER

PUMP SIZE	NO. REQ'D	FRAME 182 TO 256 - 10	PART NUMBER	NO. REQ'D	FRAME 284 TO 445 - 16	PART NUMBER
2X2X8						
3X3X8						
4X4X8		CAPSCREW			CAPSCREW	
5X5X8	4	3/8-16NCX2 1/4"	911121-118	4	5/8-16NCX2 1/2"	911129-120
1.5X1.5X10						
2X2X10						
3X3X10						
4X4X10						
6X6X10		LOCKWASHER			LOCKWASHER	
8X8X10	4	3/8"	927211-100	4	5/8"	927215-100
4X4X11 1/2						
5X5X11 1/2						
6X6X11 1/2						
8X8X11 1/2						
3X3X13						
4X4X13		NUT			NUT	
6X6X13	4	3/8"-16NC	913121-100	4	5/8"-16NC	913129-100
8X8X13						
10X10X13						

BAR CODES	
PART NUMBER	BAR CODE
911121-118	
911129-120	
913121-100	
913129-100	
927211-100	
927215-100	

**VERTICAL IN-LINE - SPLIT COUPLER
MODEL 4300
PUMP PARTS**

EQUAL SUCTION AND DISCHARGE

GROUPS 3, 4 & 5 1 1/4" IMPELLER BORE

1 5/8" MECHANICAL SEAL OR PACKING GLAND

ITEM 150 COUPLING GUARD

PUMP SIZE	NO. REQ'D	FRAMES 182 TO 256 - 10	NO. REQ'D	FRAMES 284 TO 326 -16	NO. REQ'D	FRAMES 364 TO 445 -16
2X2X8 5X5X8	2	427270-015	2	427270-016	2	427270-015
3X3X8 4X4X8	2	427270-019	2	427270-016	2	427270-016
1.5X1.5X10 2X2X10 3X3X10 4X4X10 6X6X10 8X8X10			2	427270-018	2	427270-018
4X4X11 1/2 5X5X11 1/2 6X6X11 1/2 8X8X11 1/2			2	427270-024	2	427270-024
3X3X13 4X4X13 6X6X13 8X8X13 10X10X13	2	427270-019	2	427270-020	2	427270-022

BAR CODES

PART NUMBER	BAR CODE
427270-015	
427270-016	
427270-018	
427270-019	
427270-020	
427270-022	
427270-024	

**VERTICAL IN-LINE - SPLIT COUPLER
MODEL 4300
PUMP PARTS**

EQUAL SUCTION AND DISCHARGE

GROUPS 3, 4 & 5 1 1/4" IMPELLER BORE

1 5/8" MECHANICAL SEAL OR PACKING GLAND

COMMON PARTS, ALL CONSTRUCTIONS

ITEM NUMBER	DESCRIPTION	PART NUMBER	BAR CODE
21	1 5/8" PUMP SHAFT	426689-000	
36	IMPELLER KEY	428161-714	
51	SEAL CHAMBER BUSHING	425520-001	
83	IMPELLER WASHER	425742-003	
86	IMPELLER CAPSCREW	911900-119	
102	GAUGE PLUG (4 REQ'D) 1/4"NPT. CAD PLATED	937105-201	
144	COUPLER CAPSCREW (4 REQ'D) 5/16"-18NCX2" SAE GRADE 5	911121-218	
145	LOCKWASHER (FOR ITEM 144) 4 REQ'D - 5/16"	927211-100	
146	NUT (FOR ITEM 144) 4 REQ'D - 5/16"NC	913121-200	
148	CPLR. RING KEY (PUMP SHAFT)	425518-000	
149	CPLR. KEY (PUMP SHAFT)	428163-720	
151	COUPLER GUARD BOLT 2 REQ'D - RD. HD. #8-32X3/4"	916262-116	
152	NUT (FOR ITEM 151) 2 REQ'D - #8/32	913162-100	
153	WASHER (FOR ITEM 151) 2 REQ'D - #8/32	927105-100	

VERTICAL IN-LINE - SPLIT COUPLER MODEL 4300 PUMP PARTS

EQUAL SUCTION AND DISCHARGE

GROUPS 3, 4 & 5 1 1/4" IMPELLER BORE

1 5/8" MECHANICAL SEAL OR PACKING GLAND

ITEM 140 COUPLER

FRAME SIZE	213-215-10BD	284-286-16BD	364-365-16BD
PUMP SIZE	254-256-10BD	324-326-BD	404-405-16BD
2X2X8		425519-000	
3X3X8		425519-000	
4X4X8		425519-000	425659-000
5X5X8		425519-000	425659-000
6X6X8			
1.5X1.5X10		425519-000	
2X2X10		425519-000	
3X3X10		425519-000	425659-000
4X4X10		425519-000	425659-000
6X6X10		425519-000	425659-000
8X8X10		425519-000	
4X4X11 1/2		425519-000	
5X5X11 1/2		425519-000	
6X6X11 1/2		425519-000	
8X8X11 1/2		425519-000	
3X3X13	425751-000	425519-000	425659-000
4X4X13	425751-000	425519-000	
6X6X13	425751-000	425519-000	
8X8X13	425751-000	425519-000	
10X10X13	425751-000	425519-000	425659-000

BAR CODES

CONSTRUCTION	PART NUMBER	BAR CODE
B.F. - A.I. - A.B.	425751-000	
B.F. - A.I. - A.B.	425519-000	
B.F. - A.I. - A.B.	425659-000	

VERTICAL IN-LINE - SPLIT COUPLER MODEL 4300 PUMP PARTS

EQUAL SUCTION AND DISCHARGE

GROUPS 3, 4 & 5 1 1/4" IMPELLER BORE

1 5/8" MECHANICAL SEAL OR PACKING GLAND

ITEM 147 COUPLER RING KEY (Motor Shaft)			
FRAME SIZE	213-215-10BD	284-286-16BD	364-365-16BD
PUMP SIZE	254-256-10BD	324-326-BD	404-405-16BD
2X2X8		425518-000	
3X3X8		425518-000	
4X4X8		425518-000	425651-000
5X5X8		425518-000	425651-000
6X6X8			
1.5X1.5X10		425518-000	
2X2X10		425518-000	
3X3X10		425518-000	425651-000
4X4X10		425518-000	425651-000
6X6X10		425518-000	425651-000
8X8X10		425518-000	
4X4X11 1/2		425518-000	
5X5X11 1/2		425518-000	
6X6X11 1/2		425518-000	
8X8X11 1/2		425518-000	
3X3X13	425513-000	425518-000	425651-000
4X4X13	425513-000	425518-000	
6X6X13	425513-000	425518-000	
8X8X13	425513-000	425518-000	
10X10X13	425513-000	425518-000	425651-000

BAR CODES		
CONSTRUCTION	PART NUMBER	BAR CODE
B.F. - A.I. - A.B.	425751-000	
B.F. - A.I. - A.B.	425519-000	
B.F. - A.I. - A.B.	425659-000	

**VERTICAL IN-LINE - SPLIT COUPLER
MODEL 4300
PUMP PARTS**

EQUAL SUCTION AND DISCHARGE

GROUPS 3, 4 & 5 1 1/4" IMPELLER BORE

1 5/8" MECHANICAL SEAL OR PACKING GLAND

PARTS FOR 1 5/8" OUTSIDE SEAL

ITEM NO.	DESCRIPTION	CONSTRUCTION	PART NUMBER	BAR CODE
62	MECHANICAL SEAL			
	ARMSTRONG SEAL Standard 1.625 Ab2 C-SC316-V	ALL	975002-334	
	DURAMETALLIC STD.	ALL	975002-033	
	DURAMETALLIC T.C.	ALL	975002-031	
	JOHN CRANE STD.	ALL	975000-956	
	JOHN CRANE T.C.	ALL	975000-966	
52	CAPSCREW - 4REQ'D 1/2"-13NCX1 3/4" S/S	ALL	911125-414	
163	WASHER - 4 REQ'D 1/2" FLAT	ALL	427118-100	
54	SEAL COVER	BF - DBF	426485-002	
		AI - DI	426485-001	

NOTES:

BF - DBF ---- DENOTES BRONZE FITTED - DUCTILE BRONZE FITTED

AI - DI ----- DENOTES ALL IRON - DUCTILE IRON

VERTICAL IN-LINE - SPLIT COUPLER MODEL 4300 PUMP PARTS

EQUAL SUCTION AND DISCHARGE

GROUPS 3, 4 & 5 1 1/4" IMPELLER BORE

1 5/8" MECHANICAL SEAL OR PACKING GLAND

PARTS FOR 1 5/8" INSIDE MECH. SEAL ARRANGEMENT

ITEM NO.	DESCRIPTION	CONSTRUCTION	PART NUMBER	BAR CODE
62	MECHANICAL SEAL	ALL	810150-135	
52	CAPSCREW - 4 REQ'D 1/2"-13NCX1 3/4" S/S	ALL	911125-414	
163	WASHER - 4 REQ'D 1/2" FLAT	ALL	427118-100	
54	SEAL COVER	ALL	426465-011	
55	GASKET	ALL	426467-002	
160	RETAINING RING	ALL	923104-442	

PARTS FOR 1 5/8" PACKED GLAND ARRANGEMENT

ITEM NO.	DESCRIPTION	CONSTRUCTION	PART NUMBER	BAR CODE
52	STUDBOLT - 2 REQ'D 1/2"-13NCX3" S/S	ALL	915225-424	
53	NUT - 2 REQ'D 1/2"-13NC S/S	ALL	913125-400	
163	WASHER - 2 REQ'D 1/2" FLAT	ALL	927117-100	
54	SPLIT GLAND	ALL	426462-012	
65	PACKING - 3 REQ'D 1 5/8"X3/8" JC #1340	ALL	966301-007	
66	LANTERN RING	ALL	426451-003	

NOTES:

BF - DBF ---- DENOTES BRONZE FITTED - DUCTILE BRONZE FITTED

AI - DI ----- DENOTES ALL IRON - DUCTILE IRON

VERTICAL IN-LINE - SPLIT COUPLER MODEL 4300 PUMP PARTS

EQUAL SUCTION AND DISCHARGE

GROUPS 3, 4 & 5 1 1/4" IMPELLER BORE

1 5/8" MECHANICAL SEAL OR PACKING GLAND

FLUSH LINE				
COMMON PARTS FOR OUTSIDE AND INSIDE SEAL ARRANGEMENTS				
ITEM NO.	DESCRIPTION	CONSTRUCTION	PART NUMBER	BAR CODE
57	MALE CONNECTOR	BF - DBF	939001-114	
	3/8" TUBE X 1/4"NPT	AI - DI	939001-214	
59	TUBING 20" REQUIRED	BF - DBF	997531-004	
	3/8"OD X .035 WALL	AI - DI	997153-004	
63	TEE	BF - DBF	935101-001	
	1/4" NPT	AI - DI	931101-101	
64	BUSHING	BF - DBF	935123-050	
	1/4" X 1/8" NPT	AI - DI	931123-150	
67	NIPPLE	BF - DBF	938103-001	
	1/4" X 2 1/2"	AI - DI	938003-101	
68	AIR RELEASE VALVE	BF - DBF	939018-101	
		AI - DI	218644-000	

NOTES:

BF - DBF ---- DENOTES BRONZE FITTED - DUCTILE BRONZE FITTED

AI - DI ----- DENOTES ALL IRON - DUCTILE IRON