

File No.	6042.228
Date:	August 1, 2000
Supersedes:	6042.228
Date:	June 1, 1996

ARMSTRONG

PARTS LIST

SERIES 4280

"CLOSE COUPLED"
OR
MOTOR MOUNTED PUMP

TANGENTIAL DISCHARGE
"M" DESIGNATION

1 1/4" IMPELLER BORE -- 1 5/8" MECHANICAL SEAL

OLD DESIGN

CLOSE COUPLED / MOTOR MOUNTED PUMP PARTS "OLD STYLE TANGENTIAL"

CATALOG DESIGNATIONS

SERIES	1522	3/4 AAB	1 AAB	1 1/4 AAB	1 1/2 AAB
---------------	------	---------	-------	-----------	-----------

SERIES	4260	3/4 B	1 B	1 1/4 B	1 1/2 B
formerly	1526	3/4 AAB	1 AAB	1 1/4 AAB	1 1/2 AAB

SERIES	4280 4285 4290	1 1/4D	1 1/2D	2D	2 1/2D	3D	4D	1 1/4E	1 1/2E	2E	2 1/2E	3E	4E	5E	6E
formerly	1531	1 1/4AB	1 1/2AB	2AB	2 1/2A	3A	4AB	1 1/4BB	1 1/2BB	2BB	2 1/2B	3BB	4BB	5BB	6BB

CONSTRUCTION CODE

- BF** - Denotes "Bronze Fitted" construction. Parts in contact with the pumped liquid are bronze or copper except volute and coverplate.
- AI** - Denotes "All Iron" construction. Parts in contact with the pumped liquid are cast iron or steel.
- AB** - Denotes "All Bronze" construction. Parts in contact with the pumped liquid are bronze and stainless steel.

TREATED SYSTEM WATER

Additives for sealing system leaks, and some water treatments, improperly applied, are injurious to pump seals. New hydronic systems should be thoroughly washed, fully drained and refilled with clean water before running pump.

System must be kept clean of foreign materials such as welding slag etc.

Stop-leak compounds or cleaning chemicals must be thoroughly flushed out after using.

Service Parts Warranty will be void if chemicals are improperly used or if stop-leak compound is left in system.

4280 POWER FRAMES, ALL SPEEDS													
MOTOR HP AND SPEED	1800RPM	1/2,3/4&1	1 1/2&2	3	5	7 1/2	10	15	20	25	30	40	50
	3600RPM	1 1/2	2&3	5	7 1/2	10	15	20	25	30	40	50	60
FRAME SIZE	1954 RERATE	182C	184C	213C	215C	254UC	256UC	284UC	286UC	324UC	326SC		
	1964 RERATE	143JM	145JM	182JM	184JM	213JM	215JM	254JM	256JM	284JM	286JM		
	WEST COAST							254TCZ	256TCZ	284TCZ	286TCZ	324TCZ	326TCZ
	1972 RERATE							254JP	256JP	284JP	286JP	324JP	326JP
PUMP SIZE													
1 1/4D		S	S	S	S	S	-	-	-	-	-	-	-
1 1/2D		S	S	S	S	S	S	-	-	-	-	-	-
2D		S	S	S	S	S	S	-	-	-	-	-	-
2 1/2D		S	S	S	S	S	S	M	-	-	-	-	-
3D		S	S	S	-	S	S	M	M	-	-	-	-
4D		-	S	S	S	-	S	M	M	M	M	-	-
1 1/4E		-	S	S	S	-	S	M	M	M	-	-	-
1 1/2E		-	S	S	S	-	S	M	M	M	M	-	-
2E		-	S	S	S	S	-	M	M	M	M	M	-
2 1/2E		-	-	S	S	S	-	-	-	-	-	-	-
3E		-	-	-	S	S	-	-	-	-	-	-	-
4E		-	-	-	S	S	S	M	-	-	-	-	-
5E		-	-	-	-	S	S	M	M	-	-	-	-
6E		-	-	-	-	-	-	M	M	M	-	-	-

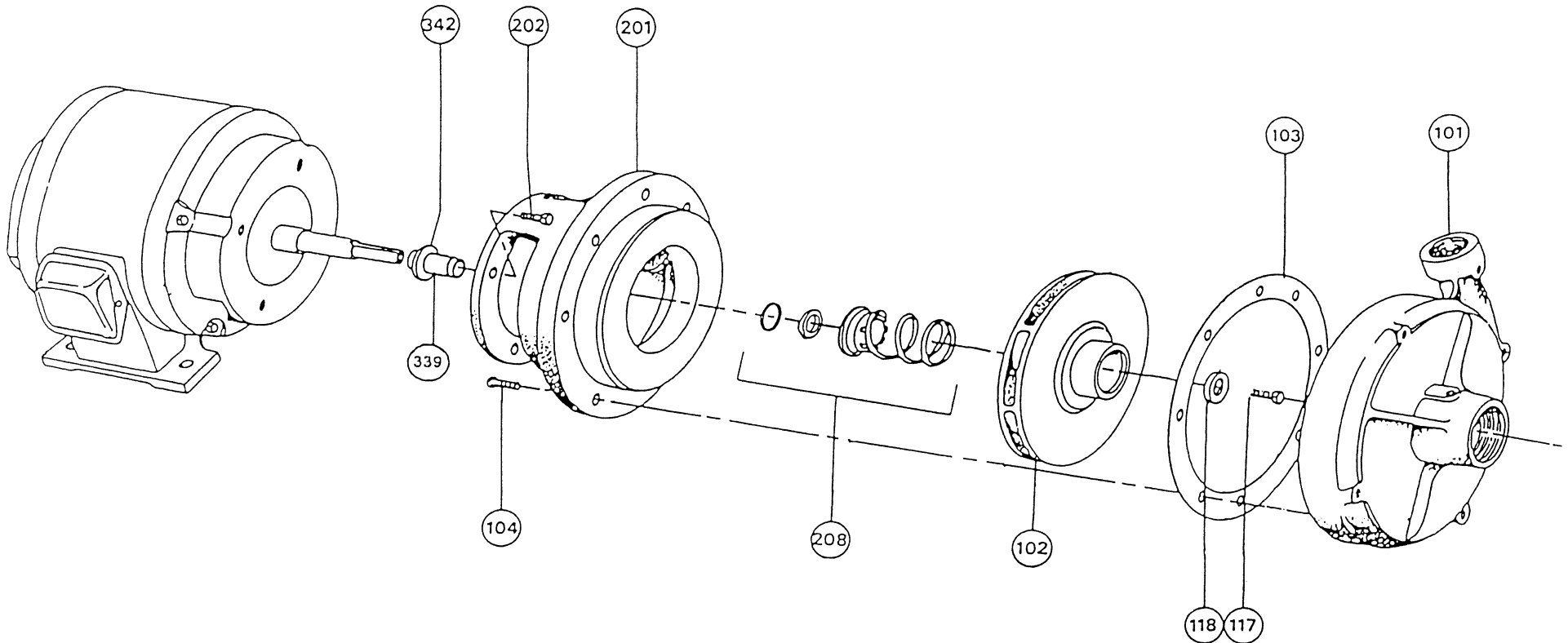
"S" DESIGNATION - 7/8" IMPELLER BORE, 1 1/4" MECHANICAL SEAL

"M" DESIGNATION - 1 1/4" IMPELLER BORE, 1 5/8" MECHANICAL SEAL

4280 OLD STYLE TANGENTIAL, CLOSE COUPLED/ MOTOR MOUNTED PUMP "M" DESIGNATION

1 1/4" IMPELLER BORE -- 1 5/8" MECHANICAL SEAL

EXPLODED VIEW



INDEX

ITEM	DESCRIPTION	PAGE	ITEM	DESCRIPTION	PAGE	ITEM	DESCRIPTION	PAGE
101	VOLUTE	4	118	IMPELLER WASHER	9	-	SHAFT SLEEVE SPACER	8
102	IMPELLER	5	201	MOTOR/PUMP BRACKET	6 & 7	339A	SHAFT SLEEVE KIT	8
103	VOLUTE GASKET	7	202	MOTOR CAPSCREW	10	342	WATER SLINGER	10
104	VOLUTE CAPSCREW	10	208	MECHANICAL SEAL ASSY.	9			
117	IMPELLER CAPSCREW	9	339	SHAFT SLEEVE	8			

MODEL 4280 "M" SIZE

CLOSE COUPLED / MOTOR MOUNTED PUMP PARTS

1 5/8" MECHANICAL SEAL - 1 1/4" IMPELLER BORE

"OLD STYLE TANGENTIAL"

ITEM 101 VOLUTE			
PUMP SIZE	MATERIAL	PART NUMBER	BAR CODE
2 1/2D	CAST IRON	425142-011	
2 1/2D	BRONZE	425142-041	
3D	CAST IRON	425144-011	
3D	BRONZE	425144-041	
4D	CAST IRON	415298-011	
4D	BRONZE	415298-041	
1 1/4E	CAST IRON	416167-011	
1 1/4E	BRONZE	416167-041	
1 1/2E	CAST IRON	425146-011	
1 1/2E	BRONZE	425146-041	
2E	CAST IRON	419152-011	
2E	BRONZE	419152-041	
4E	CAST IRON	415300-011	
4E	BRONZE	415300-041	
5E	CAST IRON	415302-011	
5E	BRONZE	415302-041	
6E	CAST IRON	416187-011	
6E	BRONZE	416187-041	

MODEL 4280 "M" SIZE

CLOSE COUPLED / MOTOR MOUNTED

PUMP PARTS

1 5/8" MECHANICAL SEAL - 1 1/4" IMPELLER BORE

"OLD STYLE TANGENTIAL"

ITEM102 IMPELLER** 1 1/4" BORE

PUMP SIZE	IMP. BORE	MAX. DIA.	CONST.	PART NUMBER	BAR CODE
2 1/2 D	1 1/4"	7"	B.F. & A.B.	419232-041	
2 1/2 D	1 1/4"	7"	A.I.	419232-011	
3 D	1 1/4"	7"	B.F. & A.B.	419234-041	
3 D	1 1/4"	7"	A.I.	419234-011	
4 D	1 1/4"	7"	B.F. & A.B.	419236-041	
4 D	1 1/4"	7"	A.I.	419236-011	
1 1/4 E	1 1/4"	9 1/2"	B.F. & A.B.	419238-041	
1 1/4 E	1 1/4"	9 1/2"	A.I.	419238-011	
1 1/2 E	1 1/4"	9 1/2"	B.F. & A.B.	419238-041	
1 1/2 E	1 1/4"	9 1/2"	A.I.	419238-011	
2 E	1 1/4"	9 1/2"	B.F. & A.B.	419239-041	
2 E	1 1/4"	9 1/2"	A.I.	419239-011	
3 E	1 1/4"	9 1/2"	B.F. & A.B.	419241-041	
3 E	1 1/4"	9 1/2"	A.I.	419241-011	
4 E	1 1/4"	9 1/2"	B.F. & A.B.	419243-041	
4 E	1 1/4"	9 1/2"	A.I.	419243-011	
5 E	1 1/4"	9 1/2"	B.F. & A.B.	419245-041	
5 E	1 1/4"	9 1/2"	A.I.	419245-011	
6 E	1 1/4"	9 1/2"	B.F. & A.B.	419247-041	
6 E	1 1/4"	9 1/2"	A.I.	419247-011	

** Impeller Part Numbers are for full or maximum diameter Impellers. Always specify Pump Serial Number and where possible, measure and advise the diameter of the Impeller being replaced on these Pumps.

MODEL 4280 "M" SIZE

CLOSE COUPLED / MOTOR MOUNTED PUMP PARTS

1 5/8" MECHANICAL SEAL - 1 1/4" IMPELLER BORE

"OLD STYLE TANGENTIAL"

ITEM 206 MOTOR /PUMP BRACKET					
PUMP SIZE	MOTOR FRAME SIZE	SEAL SIZE	CONST.	PART NUMBER	BAR CODE
2 1/2D-4D	254JP-256JP	1 5/8"	B.F. & A.I.	425392-012	
2 1/2D-4D	254JP-256JP	1 5/8"	A.B.	425392-042	
2 1/2D-4D	284UC-286UC 284JP-286JP	1 5/8"	B.F. & A.I.	419164-012	
2 1/2D-4D	284UC-286UC 284JP-286JP	1 5/8"	A.B.	419168-042	
2 1/2D-4D	324UC-404UC 326UC-405UC 324JP-326JP	1 5/8"	B.F. & A.I.	419165-012	
2 1/2D-4D	324UC-404UC 326UC-405UC 324JP-326JP	1 5/8"	A.B.	419169-042	
1 1/4E-6E	254JP-256JP 254TCZ-256TCZ	1 5/8"	B.F. & A.I.	425393-012	
1 1/4E-6E	254JP-256JP 254TCZ-256TCZ	1 5/8"	A.B.	425393-042	

MOTOR BRACKETS CONTINUED ON PAGE 7

**MODEL 4280 "M" SIZE
CLOSE COUPLED / MOTOR MOUNTED
PUMP PARTS**

**1 5/8" MECHANICAL SEAL - 1 1/4" IMPELLER BORE
"OLD STYLE TANGENTIAL"**

ITEM 206 MOTOR /PUMP BRACKET (Cont'd)					
PUMP SIZE	MOTOR FRAME SIZE	SEAL SIZE	CONST.	PART NUMBER	BAR CODE
1 1/4E-6E	284UC-286UC	1 5/8"	B.F. & A.I.	419166-012	
	284JP-286JP				
	284TCZ-286TCZ				
1 1/4E-6E	284UC-286UC	1 5/8"	A.B.	419170-042	
	284JP-286JP				
	284TCZ-286TCZ				
1 1/4E-6E	324UC-326UC	1 5/8"	B.F. & A.I.	411883-012	
	404UC-405UC				
	324JP-326JP				
	324TCZ-326TCZ				
1 1/4E-6E	324UC-326UC	1 5/8"	B.F. & A.I.	419171-042	
	404UC-405UC				
	324JP-326JP				
	324TCZ-326TCZ				

ITEM 103 VOLUTE GASKET			
PUMP SIZE	CONSTRUCTION	PART NUMBER	BAR CODE
1 1/4D TO 4D	ALL	106592-000	
1 1/4E TO 6E	ALL	406604-000	

MODEL 4280 "M" SIZE

CLOSE COUPLED / MOTOR MOUNTED PUMP PARTS

1 5/8" MECHANICAL SEAL - 1 1/4" IMPELLER BORE
"OLD STYLE TANGENTIAL"

ITEM 339 SHAFT SLEEVE				
MOTOR FRAME SIZE	SEAL SIZE	CONST.	PART NUMBER	BAR CODE
284UC TO 405USC 254 TO 326JP/TCZ 284U TO 326U	1 5/8"	B.F. & A.B.	425869-021	
284UC TO 405USC 254 TO 326JP/TCZ 284U TO 326U	1 5/8"	A.I.	425869-022	

SHAFT SLEEVE SPACER				
MOTOR FRAME SIZE	SEAL SIZE	CONST.	PART NUMBER	BAR CODE
284UC TO 405USC 254 TO 326JP/TCZ 284U TO 326U	1 5/8"	ALL	425868-004	

SHAFT SLEEVE & SPACER KITS				
MOTOR FRAME SIZE	SEAL SIZE	CONST.	PART NUMBER	BAR CODE
284UC TO 405USC 254 TO 326JP/TCZ 284U TO 326U	1 5/8"	A. B. B. F.	810150-152	
284UC TO 405USC 254 TO 326JP/TCZ 284U TO 326U	1 5/8"	A. I.	810150-153	

**MODEL 4280 "M" SIZE
CLOSE COUPLED / MOTOR MOUNTED
PUMP PARTS**

1 5/8" MECHANICAL SEAL - 1 1/4" IMPELLER BORE
"OLD STYLE TANGENTIAL"

ITEM 208 1 5/8" MECH. SEAL ASSEMBLY

PUMP SIZE	CONSTRUCTION	PART NUMBER	BAR CODE
ALL	(BUNA) B.F. & A.B.	811339-000	
ALL	(BUNA) A.I.	811866-000	
ALL	(VITON) B.F., A.B. & A.I.	819299-000	

ITEM 117 IMPELLER CAPSCREW S/S

PUMP SIZE	CONSTRUCTION	PART NUMBER	BAR CODE
ALL	ALL	911900-113	

ITEM 118 IMPELLER WASHER

PUMP SIZE	CONSTRUCTION	PART NUMBER	BAR CODE
ALL	ALL	425742-003	

**MODEL 4280 "M" SIZE
CLOSE COUPLED / MOTOR MOUNTED
PUMP PARTS**

1 5/8" MECHANICAL SEAL - 1 1/4" IMPELLER BORE
"OLD STYLE TANGENTIAL"

ITEM 104 VOLUTE CAPSCREW

PUMP SIZE	CAPSCREW SIZE	NUMBER REQ'D	PART NUMBER	BAR CODE
1 1/4D TO 4D	3/8-16NCX1	8	911121-108	
1 1/4E TO 6E	7/16-14NCX1	12	911123-108	

ITEM 207 MOTOR CAPSCREW

MOTOR FRAME SIZE	CAPSCREW SIZE	NUMBER REQ'D	PART NUMBER	BAR CODE
284UC-286UC 284TCZ-286TCZ 284JM-286JM	1/2-13NCX1 1/4"	4	911125-110	
324UC-405USC 324TCZ-326TCZ 324JP-326JP	5/8-11NCX1 1/4"	4	911129-110	

ITEM 342 WATER SLINGER

MOTOR FRAME SIZE	SEAL SIZE	CONST.	PART NUMBER	BAR CODE
284UC TO 326UC	1 5/8"	ALL	411343-000	