

File No.	6042.227
Date:	August 1, 2000
Supersedes:	6042.227
Date:	June 1, 1996

# ARMSTRONG

## PARTS LIST

### SERIES 4280

"CLOSE COUPLED"  
OR  
MOTOR MOUNTED PUMP

TANGENTIAL DISCHARGE  
"S" DESIGNATION

7/8" IMPELLER BORE -- 1 1/4" MECHANICAL SEAL

OLD DESIGN



# CLOSE COUPLED / MOTOR MOUNTED PUMP PARTS "OLD STYLE TANGENTIAL"

## CATALOG DESIGNATIONS

<b>SERIES</b>	1522	3/4 AAB	1 AAB	1 1/4 AAB	1 1/2 AAB
---------------	------	---------	-------	-----------	-----------

<b>SERIES</b>	4260	3/4 B	1 B	1 1/4 B	1 1/2 B
<b>formerly</b>	1526	3/4 AAB	1 AAB	1 1/4 AAB	1 1/2 AAB

<b>SERIES</b>	4280 4285 4290	1 1/4D	1 1/2D	2D	2 1/2D	3D	4D	1 1/4E	1 1/2E	2E	2 1/2E	3E	4E	5E	6E
<b>formerly</b>	1531	1 1/4AB	1 1/2AB	2AB	2 1/2A	3A	4AB	1 1/4BB	1 1/2BB	2BB	2 1/2B	3BB	4BB	5BB	6BB

### CONSTRUCTION CODE

- BF** - Denotes "Bronze Fitted" construction. Parts in contact with the pumped liquid are bronze or copper except volute and coverplate.
- AI** - Denotes "All Iron" construction. Parts in contact with the pumped liquid are cast iron or steel.
- AB** - Denotes "All Bronze" construction. Parts in contact with the pumped liquid are bronze and stainless steel.

### TREATED SYSTEM WATER

Additives for sealing system leaks, and some water treatments, improperly applied, are injurious to pump seals. New hydronic systems should be thoroughly washed, fully drained and refilled with clean water before running pump.

System must be kept clean of foreign materials such as welding slag etc.

Stop-leak compounds or cleaning chemicals must be thoroughly flushed out after using.

Service Parts Warranty will be void if chemicals are improperly used or if stop-leak compound is left in system.

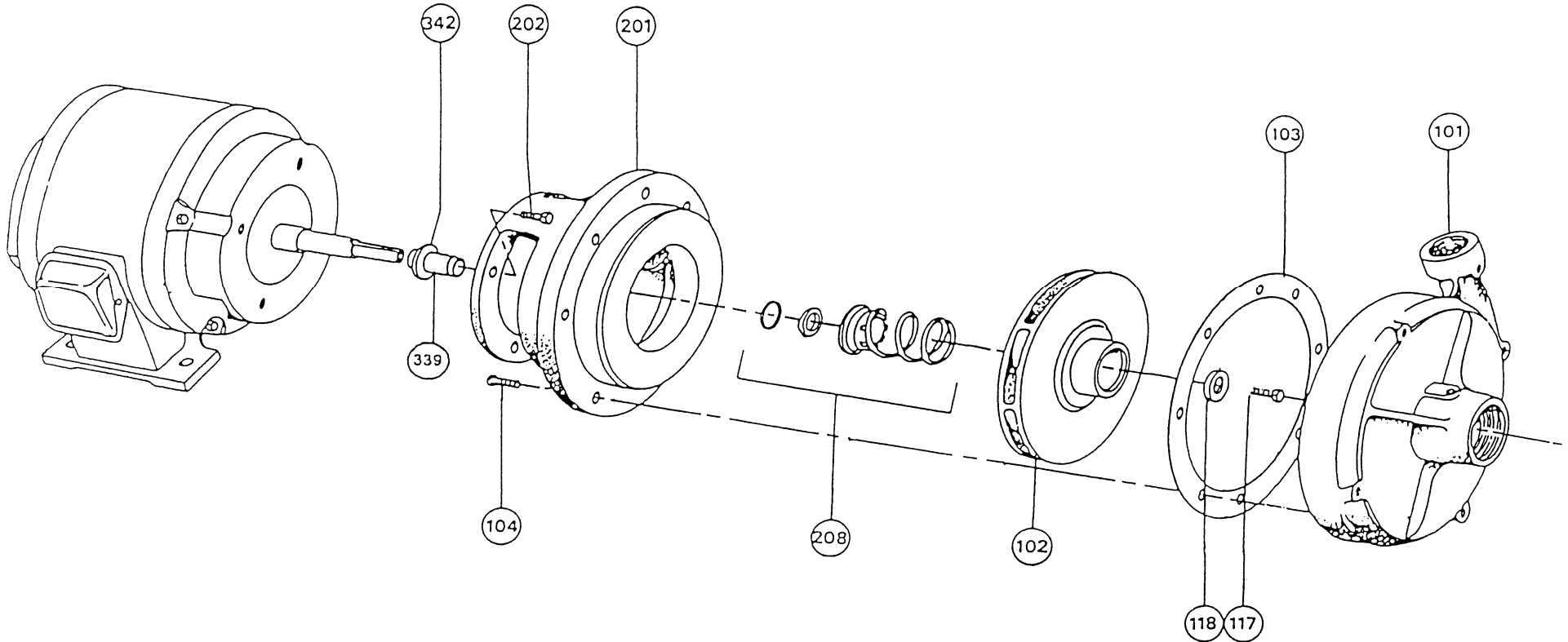
4280 POWER FRAMES, ALL SPEEDS													
MOTOR HP AND SPEED	1800RPM	1/2,3/4&1	1 1/2&2	3	5	7 1/2	10	15	20	25	30	40	50
	3600RPM	1 1/2	2&3	5	7 1/2	10	15	20	25	30	40	50	60
FRAME SIZE	1954 RERATE	182C	184C	213C	215C	254UC	256UC	284UC	286UC	324UC	326SC		
	1964 RERATE	143JM	145JM	182JM	184JM	213JM	215JM	254JM	256JM	284JM	286JM		
	WEST COAST							254TCZ	256TCZ	284TCZ	286TCZ	324TCZ	326TCZ
	1972 RERATE							254JP	256JP	284JP	286JP	324JP	326JP
PUMP SIZE													
1 1/4D		S	S	S	S	S	-	-	-	-	-	-	-
1 1/2D		S	S	S	S	S	S	-	-	-	-	-	-
2D		S	S	S	S	S	S	-	-	-	-	-	-
2 1/2D		S	S	S	S	S	S	M	-	-	-	-	-
3D		S	S	S	-	S	S	M	M	-	-	-	-
4D		-	S	S	S	-	S	M	M	M	M	-	-
1 1/4E		-	S	S	S	-	S	M	M	M	-	-	-
1 1/2E		-	S	S	S	-	S	M	M	M	M	-	-
2E		-	S	S	S	S	-	M	M	M	M	M	-
2 1/2E		-	-	S	S	S	-	-	-	-	-	-	-
3E		-	-	-	S	S	-	-	-	-	-	-	-
4E		-	-	-	S	S	S	M	-	-	-	-	-
5E		-	-	-	-	S	S	M	M	-	-	-	-
6E		-	-	-	-	-		M	M	M	-	-	-

"S" DESIGNATION - 7/8" IMPELLER BORE, 1 1/4" MECHANICAL SEAL

"M" DESIGNATION - 1 1/4" IMPELLER BORE, 1 5/8" MECHANICAL SEAL

**4280 OLD STYLE TANGENTIAL, CLOSE COUPLED/ MOTOR MOUNTED PUMP  
"S" DESIGNATION  
7/8" IMPELLER BORE -- 1 1/4" MECHANICAL SEAL**

**EXPLODED VIEW**



**INDEX**

ITEM	DESCRIPTION	PAGE	ITEM	DESCRIPTION	PAGE	ITEM	DESCRIPTION	PAGE
101	VOLUTE	4 & 5	118	IMPELLER WASHER	12	-	SHAFT SLEEVE SPACER	10
102	IMPELLER	6 & 7	201	MOTOR/PUMP BRACKET	8 & 9	339A	SHAFT SLEEVE KIT	11
103	VOLUTE GASKET	11	202	MOTOR CAPSCREW	13	342	WATER SLINGER	10
104	VOLUTE CAPSCREW	11	208	MECHANICAL SEAL KIT	12			
117	IMPELLER CAPSCREW	12	339	SHAFT SLEEVE	10			

**MODEL 4280 "S" SIZE  
CLOSE COUPLED / MOTOR MOUNTED  
PUMP PARTS**

**1 1/4" MECHANICAL SEAL - 7/8" IMPELLER BORE**

**"OLD STYLE TANGENTIAL"**

<b>ITEM 101 VOLUTE</b>			
<b>PUMP SIZE</b>	<b>MATERIAL</b>	<b>PART NUMBER</b>	<b>BAR CODE</b>
1 1/4D	CAST IRON	415290-011	
1 1/4D	BRONZE	415290-041	
1 1/2D	CAST IRON	415292-011	
1 1/2D	BRONZE	415292-041	
2D	CAST IRON	425140-011	
2D	BRONZE	425140-041	
2 1/2D	CAST IRON	425142-011	
2 1/2D	BRONZE	425142-041	
3D	CAST IRON	425144-011	
3D	BRONZE	425144-041	
4D	CAST IRON	415298-011	
4D	BRONZE	415298-041	

**VOLUTES CONTINUED ON PAGE 5**

# MODEL 4280 "S" SIZE

## CLOSE COUPLED / MOTOR MOUNTED

### PUMP PARTS

1 1/4" MECHANICAL SEAL - 7/8" IMPELLER BORE

"OLD STYLE TANGENTIAL"

<b>ITEM 101 VOLUTE</b>			
PUMP SIZE	MATERIAL	PART NUMBER	BAR CODE
1 1/4E	CAST IRON	416167-011	
1 1/4E	BRONZE	416167-041	
1 1/2E	CAST IRON	425146-011	
1 1/2E	BRONZE	425146-041	
2E	CAST IRON	419152-011	
2E	BRONZE	419152-041	
2 1/2E	CAST IRON	415296-011	
2 1/2E	BRONZE	415296-041	
3E	CAST IRON	416179-011	
3E	BRONZE	416179-041	
4E	CAST IRON	415300-011	
4E	BRONZE	415300-041	
5E	CAST IRON	415302-011	
5E	BRONZE	415302-041	

# MODEL 4280 "S" SIZE CLOSE COUPLED / MOTOR MOUNTED PUMP PARTS

1 1/4" MECHANICAL SEAL - 7/8" IMPELLER BORE

"OLD STYLE TANGENTIAL"

<b>ITEM 102 IMPELLER** 7/8" BORE</b>					
PUMP SIZE	IMP. BORE	MAX. DIA.	CONST.	PART NUMBER	BAR CODE
1 1/4 D	7/8"	7"	B.F. & A.B.	411852-041	
1 1/4 D	7/8"	7"	A.I.	411852-011	
1 1/2 D	7/8"	7"	B.F. & A.B.	411860-041	
1 1/2 D	7/8"	7"	A.I.	411860-011	
2 D	7/8"	7"	B.F. & A.B.	411860-041	
2 D	7/8"	7"	A.I.	411860-011	
2 1/2 D	7/8"	7"	B.F. & A.B.	406642-041	
2 1/2 D	7/8"	7"	A.I.	406642-011	
3 D	7/8"	7"	B.F. & A.B.	411868-041	
3 D	7/8"	7"	A.I.	411868-011	
4 D	7/8"	7"	B.F. & A.B.	411874-041	
4 D	7/8"	7"	A.I.	411874-011	

\*\* Impeller Part Numbers are for full or maximum diameter Impellers. Always specify Pump Serial Number and where possible, measure and advise the diameter of the Impeller being replaced on these Pumps.

**IMPELLERS CONTINUED ON PAGE 7**



# MODEL 4280 "S" SIZE

## CLOSE COUPLED / MOTOR MOUNTED

### PUMP PARTS

1 1/4" MECHANICAL SEAL - 7/8" IMPELLER BORE

"OLD STYLE TANGENTIAL"

<b>ITEM 102 IMPELLER** 7/8" BORE</b>					
PUMP SIZE	IMP. BORE	MAX. DIA.	CONST.	PART NUMBER	BAR CODE
1 1/4 E	7/8"	9 1/2"	B.F. & A.B.	407922-041	
1 1/4 E	7/8"	9 1/2"	A.I.	407922-011	
1 1/2 E	7/8"	9 1/2"	B.F. & A.B.	407922-041	
1 1/2 E	7/8"	9 1/2"	A.I.	407922-011	
2 E	7/8"	9 1/2"	B.F. & A.B.	411881-041	
2 E	7/8"	9 1/2"	A.I.	411881-011	
2 1/2 E	7/8"	9 1/2"	B.F. & A.B.	411881-041	
2 1/2 E	7/8"	9 1/2"	A.I.	411881-011	
3 E	7/8"	9 1/2"	B.F. & A.B.	419465-041	
3 E	7/8"	9 1/2"	A.I.	419465-011	
4 E	7/8"	9 1/2"	B.F. & A.B.	411940-041	
4 E	7/8"	9 1/2"	A.I.	411940-011	
5 E	7/8"	9 1/2"	B.F. & A.B.	411941-041	
5 E	7/8"	9 1/2"	A.I.	411941-011	

\*\* Impeller Part Numbers are for full or maximum diameter Impellers. Always specify Pump Serial Number and where possible, measure and advise the diameter of the Impeller being replaced on these Pumps.

**MODEL 4280 "S" SIZE  
CLOSE COUPLED / MOTOR MOUNTED  
PUMP PARTS**

**1 1/4" MECHANICAL SEAL - 7/8" IMPELLER BORE**

**"OLD STYLE TANGENTIAL"**

<b>ITEM 201 MOTOR/PUMP BRACKET</b>					
<b>PUMP SIZE</b>	<b>MOTOR FRAME SIZE</b>	<b>SEAL SIZE</b>	<b>CONST.</b>	<b>PART NUMBER</b>	<b>BAR CODE</b>
1 1/4D-4D	182C-184C	1 1/4"	B.F. & A.I.	409026-012	
	143JM-145JM				
	182JM-184JM				
1 1/4D-4D	182C-184C	1 1/4"	A.B.	409026-042	
	143JM-145JM				
	182JM-184JM				
1 1/4D-4D	215C-254UC	1 1/4"	B.F. & A.I.	406931-012	
	215C-256UC				
	213JM-215JM				
1 1/4D-4D	215C-254UC	1 1/4"	A.B.	406931-042	
	215C-256UC				
	213JM-215JM				

**MOTOR/PUMP BRACKETS CONTINUED ON PAGE 9**

**MODEL 4280 "S" SIZE  
CLOSE COUPLED / MOTOR MOUNTED  
PUMP PARTS**

**1 1/4" MECHANICAL SEAL - 7/8" IMPELLER BORE**

**"OLD STYLE TANGENTIAL"**

<b>ITEM 201 MOTOR/PUMP BRACKET</b>					
<b>PUMP SIZE</b>	<b>MOTOR FRAME SIZE</b>	<b>SEAL SIZE</b>	<b>CONST.</b>	<b>PART NUMBER</b>	<b>BAR CODE</b>
1 1/4E-5E	182C-184C	1 1/4"	B.F. & A.I.	409023-012	
	143JM-145JM				
	182JM-184JM				
1 1/4E-5E	182C-184C	1 1/4"	A.B.	409023-042	
	143JM-145JM				
	182JM-184JM				
1 1/4E-5E	215C-254UC	1 1/4"	B.F. & A.I.	406948-012	
	215C-256UC				
	213JM-215JM				
1 1/4E-5E	215C-254UC	1 1/4"	A.B.	406953-042	
	215C-256UC				
	213JM-215JM				

**MODEL 4280 "S" SIZE**  
**CLOSE COUPLED / MOTOR MOUNTED**  
**PUMP PARTS**

1 1/4" MECHANICAL SEAL - 7/8" IMPELLER BORE

"OLD STYLE TANGENTIAL"

<b>ITEM 339 SHAFT SLEEVE</b>				
MOTOR FRAME SIZE	SEAL SIZE	CONST.	PART NUMBER	BAR CODE
182C TO 256UC 143JM TO 215JM 254U TO 256U	1 1/4"	B.F. & A.B.	425869-001	
182C TO 256UC 143JM TO 215JM 254U TO 256U	1 1/4"	A.I.	425869-002	

<b>SHAFT SLEEVE SPACER</b>				
MOTOR FRAME SIZE	SEAL SIZE	CONST.	PART NUMBER	BAR CODE
182C TO 256UC 143JM TO 215JM 254U TO 256U	1 1/4"	ALL	425868-001	

<b>ITEM 342 WATER SLINGER</b>				
MOTOR FRAME SIZE	SEAL SIZE	CONST.	PART NUMBER	BAR CODE
182C TO 256U	1 1/4"	ALL	406622-000	

**MODEL 4280 "S" SIZE  
CLOSE COUPLED / MOTOR MOUNTED  
PUMP PARTS**

**1 1/4" MECHANICAL SEAL - 7/8" IMPELLER BORE**

**"OLD STYLE TANGENTIAL"**

**SHAFT SLEEVE & SPACER KIT**

MOTOR FRAME SIZE	SEAL SIZE	CONSTRUCTION	PART NUMBER	BAR CODE
182C TO 256UC 143JM TO 215JM 254U TO 256U	1 1/4"	B.F. & A.B.	835085-001	
182C TO 256UC 143JM TO 215JM 254U TO 256U	1 1/4"	A.I.	835085-002	

**ITEM 103 VOLUTE GASKET**

PUMP SIZE	CONSTRUCTION	PART NUMBER	BAR CODE
1 1/4D TO 4D	B.F./A.I./A.B.	106592-000	
1 1/4E TO 5E	B.F./A.I./A.B.	406604-000	

**ITEM 104 VOLUTE CAPSCREW**

PUMP SIZE	CAPSCREW SIZE	NUMBER REQ'D	PART NUMBER	BAR CODE
1 1/4D TO 4D	3/8-16NCX1"	8	911121-108	
1 1/4E TO 5E	7/16-14NCX1"	12	911123-108	

**MODEL 4280 "S" SIZE  
CLOSE COUPLED / MOTOR MOUNTED  
PUMP PARTS**

**1 1/4" MECHANICAL SEAL - 7/8" IMPELLER BORE**

**"OLD STYLE TANGENTIAL"**

<b>ITEM 208 1 1/4" MECHANICAL SEAL KIT</b>			
PUMP SIZE	CONSTRUCTION	PART NUMBER	BAR CODE
ALL	B.F./A.B./A.I. (STD. EPDM)	825458-001	
ALL	B.F./A.B./A.I. (VITON)	825458-003	

<b>ITEM 117 IMPELLER CAPSCREW S/S</b>			
PUMP SIZE	CONSTRUCTION	PART NUMBER	BAR CODE
ALL	ALL	911900-108	

<b>ITEM 118 IMPELLER WASHER</b>			
PUMP SIZE	CONSTRUCTION	PART NUMBER	BAR CODE
ALL	B.F.& A.I.	406614-000	
ALL	A.B.	406677-000	

**MODEL 4280 "S" SIZE  
CLOSE COUPLED / MOTOR MOUNTED  
PUMP PARTS**

**1 1/4" MECHANICAL SEAL - 7/8" IMPELLER BORE**

**"OLD STYLE TANGENTIAL"**

<b>ITEM 207 MOTOR CAPSCREW</b>				
<b>MOTOR FRAME SIZE</b>	<b>CAPSCREW SIZE</b>	<b>NUMBER REQ'D</b>	<b>PART NUMBER</b>	<b>BAR CODE</b>
182C-184C				
143JM-145JM	3/8-16NCX1 1/4"	4	911121-110	
182JM-184JM				
213C-256UC				
213JM-215JM	1/2-13NCX1 1/4"	4	911125-110	